

Anti-CACNA2D2 antibody (540-620 aa) (STJ197411)

STJ197411

GENERAL INFORMATION

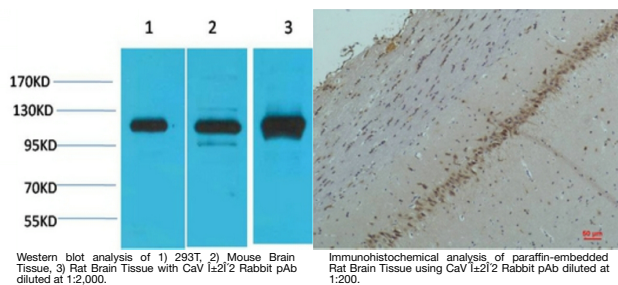
Product Type	Primary antibodies
Short Description	Rabbit polyclonal antibody anti-Voltage-dependent calcium channel subunit alpha-2/delta-2 (540-620 aa) is suitable for use in Western Blot, Immunohistochemistry and Immunofluorescence research applications.
Applications	WB/IHC/IF
Host/Source	Rabbit
Reactivity	Human/Rat/Mouse

PRODUCT PROPERTIES

Clonality	Polyclonal
Clone ID	
Concentration	1 mg/mL
Conjugation	Unconjugated
Purification	The antibody was affinity-purified from rabbit antiserum by affinity-chromatography using epitope-specific immunogen.
Dilution Range	WB 1:500-1:2000 IHC 1:100-1:300 ELISA 1:40000 IF 1:50-200
Formulation	Liquid in PBS containing 50% Glycerol, 0.5% BSA and 0.02% Sodium Azide.
Isotype	IgG
Storage Instruction	Store at -20°C for up to 1 year from the date of receipt, and avoid repeat freeze-thaw cycles.

TARGET INFORMATION

Gene ID	9254
Gene Symbol	CACNA2D2
Uniprot ID	CA2D2_HUMAN
Immunogen	Synthetic peptide derived from CaV Alpha 2 Delta 2 at the amino acid range 540-620
Immunogen Region	540-620 aa
Specificity	The antibody detects endogenous CaV Alpha 2 Delta 2 protein
Immunogen Sequence	



This product is suitable for in-vitro studies under the RESEARCH USE ONLY [RUO] licence. This product must not be used as for diagnostic or other medical purposes.
St John's Laboratory Ltd, Knowledge Dock Business Centre, University Way, London, E16 2RD | Tel: 0208 223 3081