

Anti-KRT18 antibody (STJ197408)

STJ197408

GENERAL INFORMATION

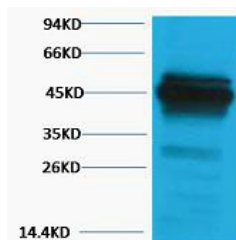
| | |
|--------------------------|--|
| Product Type | Primary antibodies |
| Short Description | Rabbit polyclonal antibody anti-Keratin, type I cytoskeletal 18 is suitable for use in Western Blot research applications. |
| Applications | WB |
| Host/Source | Rabbit |
| Reactivity | Human |

PRODUCT PROPERTIES

| | |
|----------------------------|---|
| Clonality | Polyclonal |
| Clone ID | |
| Concentration | |
| Conjugation | Unconjugated |
| Purification | The antibody was affinity-purified from rabbit antiserum by affinity-chromatography using epitope-specific immunogen. |
| Dilution Range | WB 1:1000-2000 |
| Formulation | Liquid in PBS pH7.4, 0.5% BSA, 0.02% Sodium Azide and 50% Glycerol. |
| Isotype | IgG |
| Storage Instruction | Store at -20°C for up to 1 year from the date of receipt, and avoid repeat freeze-thaw cycles. |

TARGET INFORMATION

| | |
|---------------------------|---|
| Gene ID | 3875 |
| Gene Symbol | KRT18 |
| Uniprot ID | K1C18_HUMAN |
| Immunogen | Recombinant Protein of Keratin type I cytoskeletal 18 |
| Immunogen Region | |
| Specificity | The antibody detects endogenous Cytokeratin 18 protein. |
| Immunogen Sequence | |



Western blot analysis of HeLa, Rabbit pAb diluted at 1:2000. Secondary antibody (STJ89666) was diluted at 1:20000

This product is suitable for in-vitro studies under the RESEARCH USE ONLY [RUO] licence. This product must not be used as for diagnostic or other medical purposes.
St John's Laboratory Ltd, Knowledge Dock Business Centre, University Way, London, E16 2RD | Tel: 0208 223 3081