

Anti-KCNK10 antibody (16-66 aa) (STJ197368)

STJ197368

GENERAL INFORMATION

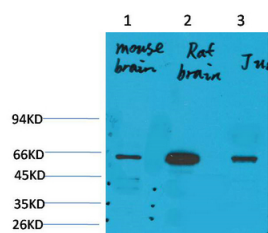
Product Type	Primary antibodies
Short Description	Rabbit polyclonal antibody anti-Potassium channel subfamily K member 10 channel subunit (16-66 aa) is suitable for use in Western Blot, Immunohistochemistry and Immunofluorescence research applications.
Applications	WB/IHC/IF
Host/Source	Rabbit
Reactivity	Human/Rat/Mouse

PRODUCT PROPERTIES

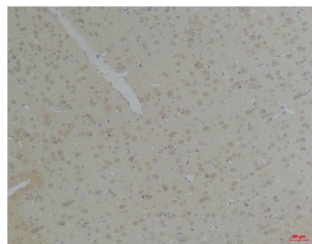
Clonality	Polyclonal
Clone ID	
Concentration	1 mg/mL
Conjugation	Unconjugated
Purification	The antibody was affinity-purified from rabbit antiserum by affinity-chromatography using epitope-specific immunogen.
Dilution	WB 1:1000-2000
Range	IHC 1:100-200 IF 1:50-200
Formulation	Liquid in PBS containing 50% Glycerol, 0.5% BSA and 0.02% Sodium Azide.
Isotype	IgG
Storage	Store at -20°C for up to 1 year from the date of receipt, and avoid repeat freeze-thaw cycles.
Instruction	

TARGET INFORMATION

Gene ID	54207
Gene Symbol	KCNK10
Uniprot ID	KCNKA_HUMAN
Immunogen	Synthetic peptide derived from KCNK10 (TREK-2) at the amino acid range 16-66
Immunogen Region	16-66 aa
Specificity	KCNK10 (TREK-2) protein (A237) detects endogenous levels of KCNK10 (TREK-2)
Immunogen Sequence	



Western blot analysis of 1) Mouse BrainTissue, 2) Rat Brain Tissue, 3) Jurkat with KCNK10 (TREK-2) Rabbit pAb diluted at 1:2,000.



Immunohistochemical analysis of paraffin-embedded Rat BrainTissue using KCNK10 (TREK-2) Rabbit pAb diluted at 1:200.

This product is suitable for in-vitro studies under the RESEARCH USE ONLY [RUO] licence. This product must not be used as for diagnostic or other medical purposes.
St John's Laboratory Ltd, Knowledge Dock Business Centre, University Way, London, E16 2RD | Tel: 0208 223 3081