

Anti-KCNV2 antibody (STJ197358)

STJ197358

GENERAL INFORMATION

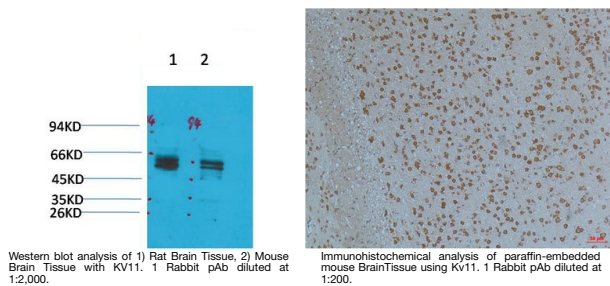
| | |
|--------------------------|--|
| Product Type | Primary antibodies |
| Short Description | Rabbit polyclonal antibody anti-Potassium voltage-gated channel subfamily V member 2 is suitable for use in Western Blot, Immunohistochemistry and Immunofluorescence research applications. |
| Applications | WB/IHC/IF |
| Host/Source | Rabbit |
| Reactivity | Rat/Mouse |

PRODUCT PROPERTIES

| | |
|----------------------------|---|
| Clonality | Polyclonal |
| Clone ID | |
| Concentration | 1 mg/mL |
| Conjugation | Unconjugated |
| Purification | The antibody was affinity-purified from rabbit antiserum by affinity-chromatography using epitope-specific immunogen. |
| Dilution Range | WB 1:1000-2000 IHC 1:100-200 IF 1:50-200 |
| Formulation | Liquid in PBS containing 50% Glycerol, 0.5% BSA and 0.02% Sodium Azide. |
| Isotype | IgG |
| Storage Instruction | Store at -20°C for up to 1 year from the date of receipt, and avoid repeat freeze-thaw cycles. |

TARGET INFORMATION

| | |
|---------------------------|---|
| Gene ID | 169522 |
| Gene Symbol | KCNV2 |
| Uniprot ID | KCNV2_HUMAN |
| Immunogen | Synthetic Peptide of Kv11.1 |
| Region | |
| Specificity | Kv11.1 protein (A262) detects endogenous levels of Kv11.1 |
| Immunogen Sequence | |



Western blot analysis of 1) Rat Brain Tissue, 2) Mouse Brain Tissue with Kv11.1. 1 Rabbit pAb diluted at 1:2,000.

Immunohistochemical analysis of paraffin-embedded mouse Brain Tissue using Kv11.1 Rabbit pAb diluted at 1:200.

This product is suitable for in-vitro studies under the RESEARCH USE ONLY [RUO] licence. This product must not be used as for diagnostic or other medical purposes.
St John's Laboratory Ltd, Knowledge Dock Business Centre, University Way, London, E16 2RD | Tel: 0208 223 3081