

Anti-MAP1LC3B antibody (STJ197355)

STJ197355

GENERAL INFORMATION

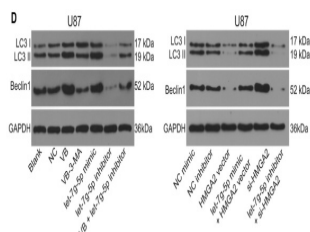
Product Type	Primary antibodies
Short Description	Rabbit polyclonal antibody anti-Microtubule-associated proteins 1A/1B light chain 3B is suitable for use in Western Blot, Immunofluorescence and Immunohistochemistry research applications.
Applications	WB/IF/IHC
Host/Source	Rabbit
Reactivity	Human/Mouse/Rat

PRODUCT PROPERTIES

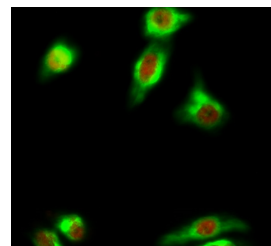
Clonality	Polyclonal
Clone ID	
Concentration	
Conjugation	Unconjugated
Purification	The antibody was affinity-purified from rabbit antiserum by affinity-chromatography using epitope-specific immunogen.
Dilution Range	WB 1:1000-2000 IHC 1:200-500 IF 1:200
Formulation	Liquid in PBS pH7.4, 0.5% BSA, 0.02% Sodium Azide and 50% Glycerol.
Isotype	IgG
Storage	Store at -20°C for up to 1 year from the date of receipt, and avoid repeat freeze-thaw cycles.
Instruction	

TARGET INFORMATION

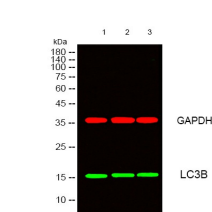
Gene ID	81631
Gene Symbol	MAP1LC3B
Uniprot ID	MLP3B_HUMAN
Immunogen	Recombinant Protein of MAP LC3 Beta
Immunogen Region	
Specificity	The antibody detects endogenous MAP LC3 Beta protein.
Immunogen Sequence	



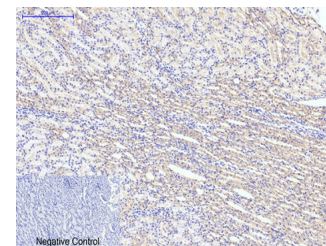
Jia, WeiQiang, et al. "Verbasocidin inhibits progression of glioblastoma cells by promoting Letaf/gap5p and downregulating HMG2A via Wnt/beta-catenin signalling blockade." *Journal of cellular and molecular medicine* 24, 5 (2020) : 2901-2916.



Immunofluorescence analysis of Hela cell. 1. Cleaved-PARP-1 (D214) Polyclonal Antibody (red) was diluted at 1:200 (4°C overnight). LC3B Polyclonal Antibody (green) was diluted at 1:200 (4°C overnight). 2. Goat Anti Rabbit Alexa Fluor 594 Catalog:STJ5000476 was diluted at 1:1000 (room temperature, 50min). Goat Anti mouse Alexa Fluor 488 Catalog:STJ5000301 was diluted at 1:1000 (room temperature, 50min).



Western blot analysis of lysates from 1) Hela, 2) 3T3, 3) Rat Brain Tissue cells. (Green) primary antibody was diluted at 1:1000, 4°C over night, secondary antibody (STJ5000791) was diluted at 1:10000, 37°C 1 hour. (Red) GAPDH Monoclonal Antibody (258) (STJ96891) antibody was diluted at 1:5000 as loading control, 4°C over night, secondary antibody (STJ5000788) was diluted at 1:10000, 37°C 1 hour.



Immunohistochemical analysis of paraffin-embedded Rat-kidney tissue. 1. LC3B Polyclonal Antibody was diluted at 1:200 (4°C overnight). 2. Sodium citrate pH 6.0 was used for antibody retrieval (>98°C, 20min). 3. Secondary antibody was diluted at 1:200 (room temperature, 30min). Negative control was used by secondary antibody only.

This product is suitable for in-vitro studies under the RESEARCH USE ONLY [RUO] licence. This product must not be used as for diagnostic or other medical purposes.
St John's Laboratory Ltd, Knowledge Dock Business Centre, University Way, London, E16 2RD | Tel: 0208 223 3081