

Anti-NBR1 antibody (STJ197345)

STJ197345

GENERAL INFORMATION

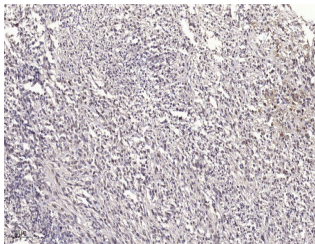
| | |
|--------------------------|--|
| Product Type | Primary antibodies |
| Short Description | Rabbit polyclonal antibody anti-Next to BRCA1 gene 1 protein is suitable for use in Immunohistochemistry and Immunofluorescence research applications. |
| Applications | IHC/IF |
| Host/Source | Rabbit |
| Reactivity | Human/Mouse/Rat |

PRODUCT PROPERTIES

| | |
|-----------------------|---|
| Clonality | Polyclonal |
| Clone ID | |
| Concentration | 1 mg/mL |
| Conjugation | Unconjugated |
| Purification | The antibody was affinity-purified from rabbit antiserum by affinity-chromatography using epitope-specific immunogen. |
| Dilution Range | IHC-P 1:50-300 IF 1:50-200 |
| Formulation | Liquid in PBS containing 50% Glycerol, 0.5% BSA and 0.02% Sodium Azide. |
| Isotype | IgG |
| Storage | Store at -20°C for up to 1 year from the date of receipt, and avoid repeat freeze-thaw cycles. |
| Instruction | |

TARGET INFORMATION

| | |
|---------------------------|--|
| Gene ID | 4077 |
| Gene Symbol | NBR1 |
| Uniprot ID | NBR1_HUMAN |
| Immunogen | Recombinant Protein of NBR1 |
| Immunogen Region | |
| Specificity | The antibody detects endogenous NBR1 protein |
| Immunogen Sequence | |



Immunohistochemical analysis of paraffin-embedded human small intestinal carcinoma tissue. 1, primary Antibody was diluted at 1:200 (4A°C overnight). 2, Sodium citrate pH 6.0 was used for antigen retrieval (>98A°C, 20min). 3, Secondary antibody was diluted at 1:200