

Anti-S100B antibody (STJ197336)

STJ197336

GENERAL INFORMATION

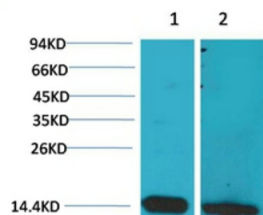
| | |
|--------------------------|--|
| Product Type | Primary antibodies |
| Short Description | Rabbit polyclonal antibody anti-Protein S100-B is suitable for use in Western Blot, Immunohistochemistry and Immunofluorescence research applications. |
| Applications | WB/IHC/IF |
| Host/Source | Rabbit |
| Reactivity | Human/Rat/Mouse |

PRODUCT PROPERTIES

| | |
|-----------------------|---|
| Clonality | Polyclonal |
| Clone ID | |
| Concentration | 1 mg/mL |
| Conjugation | Unconjugated |
| Purification | The antibody was affinity-purified from rabbit antiserum by affinity-chromatography using epitope-specific immunogen. |
| Dilution Range | WB 1:500-1:2000 IHC 1:100-1:300 ELISA 1:40000 IF 1:50-200 |
| Formulation | Liquid in PBS containing 50% Glycerol, 0.5% BSA and 0.02% Sodium Azide. |
| Isotype | IgG |
| Storage | Store at -20°C for up to 1 year from the date of receipt, and avoid repeat freeze-thaw cycles. |
| Instruction | |

TARGET INFORMATION

| | |
|--------------------|---|
| Gene ID | 6285 |
| Gene Symbol | S100B |
| Uniprot ID | S100B_HUMAN |
| Immunogen | Recombinant Protein of S100 Beta |
| Immunogen | |
| Region | |
| Specificity | The antibody detects endogenous S100 Beta protein |
| Immunogen | |
| Sequence | |



Western blot analysis of 1) Mouse Brain Tissue, 2) Rat Brain Tissue with S100B Rabbit pAb diluted at 1:2,000.

This product is suitable for in-vitro studies under the RESEARCH USE ONLY [RUO] licence. This product must not be used as for diagnostic or other medical purposes.
St John's Laboratory Ltd, Knowledge Dock Business Centre, University Way, London, E16 2RD | Tel: 0208 223 3081