

Anti-Alpha Tubulin antibody (STJ197321)

STJ197321

GENERAL INFORMATION

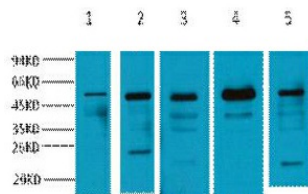
Product Type	Primary antibodies
Short Description	Rabbit polyclonal antibody anti-Alpha-tubulin is suitable for use in Western Blot research applications.
Applications	WB
Host/Source	Rabbit
Reactivity	Human/Mouse/Rat

PRODUCT PROPERTIES

Clonality	Polyclonal
Clone ID	
Concentration	
Conjugation	Unconjugated
Purification	The antibody was affinity-purified from rabbit antiserum by affinity-chromatography using epitope-specific immunogen.
Dilution Range	WB 1:2000
Formulation	Liquid in PBS pH7.4, 0.5% BSA, 0.02% Sodium Azide and 50% Glycerol.
Isotype	IgG
Storage Instruction	Store at -20°C for up to 1 year from the date of receipt, and avoid repeat freeze-thaw cycles.

TARGET INFORMATION

Gene ID	10376 7846
Gene Symbol	TUBA1B TUBA1A
Uniprot ID	TBA1B_HUMAN TBA1A_HUMAN
Immunogen	Recombinant Protein of Tubulin alpha-1A chain
Immunogen Region	
Specificity	The antibody detects endogenous Alpha-tubulin protein.
Immunogen Sequence	



Western blot analysis of 1) Mouse skeletal muscle tissue, 2) Mouse kidney tissue, 3) Mouse Heart Tissue, 4) Mouse brain tissue, 5) Mouse Liver tissue, diluted at 1:2000. Secondary antibody (STJ99666) was diluted at 1:20000

This product is suitable for in-vitro studies under the RESEARCH USE ONLY [RUO] licence. This product must not be used as for diagnostic or other medical purposes.
St John's Laboratory Ltd, Knowledge Dock Business Centre, University Way, London, E16 2RD | Tel: 0208 223 3081