

## Anti-Tri-Methyl-Histone H3-Lys36 antibody (STJ197287)

STJ197287

### GENERAL INFORMATION

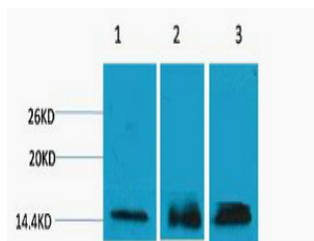
<b>Product Type</b>	Primary antibodies
<b>Short Description</b>	Rabbit polyclonal antibody anti-Tri-Methyl-Histone H3-Lys36 is suitable for use in Western Blot research applications.
<b>Applications</b>	WB
<b>Host/Source</b>	Rabbit
<b>Reactivity</b>	Human/Mouse/Rat

### PRODUCT PROPERTIES

<b>Clonality</b>	Polyclonal
<b>Clone ID</b>	
<b>Concentration</b>	
<b>Conjugation</b>	Unconjugated
<b>Purification</b>	The antibody was affinity-purified from rabbit antiserum by affinity-chromatography using epitope-specific immunogen.
<b>Dilution Range</b>	WB 1:500-1000
<b>Formulation</b>	Liquid in PBS pH7.4, 0.5% BSA, 0.02% Sodium Azide and 50% Glycerol.
<b>Isotype</b>	IgG
<b>Storage Instruction</b>	Store at -20°C for up to 1 year from the date of receipt, and avoid repeat freeze-thaw cycles.

### TARGET INFORMATION

<b>Gene ID</b>	<a href="#">126961/333932/653604</a> <a href="#">8350/8351/8352/8353/8354/8355/</a>
<b>Gene Symbol</b>	<a href="#">H3C15.H3C14.H3C13</a>
<b>Uniprot ID</b>	<a href="#">H32_HUMAN</a> <a href="#">H31_HUMAN</a> <a href="#">H33_HUMAN</a> <
<b>Immunogen</b>	Synthetic Peptide of Histone H3 (Tri Methyl Lys36)
<b>Immunogen Region</b>	
<b>Specificity</b>	The antibody detects endogenous Histone H3 (Tri Methyl Lys36) protein.
<b>Immunogen Sequence</b>	



Western blot analysis of 1) HeLa, 2) 3T3, 3) Rat Liver Tissue, diluted at 1:1000. Secondary antibody (STJ99666) was diluted at 1:20000 cells nucleus extracted by Minute TM Cytoplasmic and Nuclear Fractionation kit (SC-003, Inventibiotec, MN, USA).

This product is suitable for in-vitro studies under the RESEARCH USE ONLY [RUO] licence. This product must not be used as for diagnostic or other medical purposes.  
St John's Laboratory Ltd, Knowledge Dock Business Centre, University Way, London, E16 2RD | Tel: 0208 223 3081