

Anti-PIP antibody (50-146 aa) [ABT175] (STJ197269)

STJ197269

GENERAL INFORMATION

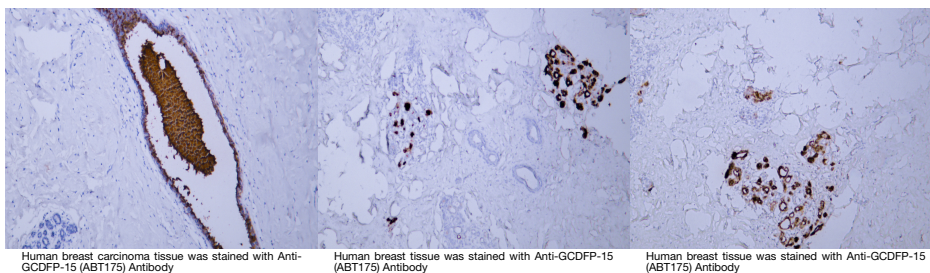
Product Type	Primary antibodies
Short Description	Mouse monoclonal antibody anti-Prolactin-inducible protein (50-146 aa) is suitable for use in Immunohistochemistry research applications.
Applications	IHC
Host/Source	Mouse
Reactivity	Human

PRODUCT PROPERTIES

Clonality	Monoclonal
Clone ID	ABT175
Concentration	
Conjugation	Unconjugated
Purification	The antibody was affinity-purified from mouse ascites by affinity-chromatography using specific immunogen.
Dilution Range	IHC-P 1:200-400
Formulation	Liquid in PBS pH7.2, 0.03% Proclin 300, with stabilizing protein.
Isotype	IgG1k
Storage Instruction	Store at -20°C for up to 1 year from the date of receipt, and avoid repeat freeze-thaw cycles.

TARGET INFORMATION

Gene ID	5304
Gene Symbol	PIP
Uniprot ID	PIP_HUMAN
Immunogen	Synthesized peptide derived from the human GCDFP-15 at the amino acid range 50-146
Immunogen Region	50-146 aa
Specificity	The antibody can specifically recognize human GCDFP-15 protein.
Immunogen Sequence	



Human breast carcinoma tissue was stained with Anti-GCDFP-15 (ABT175) Antibody

Human breast tissue was stained with Anti-GCDFP-15 (ABT175) Antibody

Human breast tissue was stained with Anti-GCDFP-15 (ABT175) Antibody

This product is suitable for in-vitro studies under the RESEARCH USE ONLY [RUO] licence. This product must not be used as for diagnostic or other medical purposes.
St John's Laboratory Ltd, Knowledge Dock Business Centre, University Way, London, E16 2RD | Tel: 0208 223 3081