

Anti-CLDN3 antibody (150-220 aa) [ABT509] (STJ197262)

STJ197262

GENERAL INFORMATION

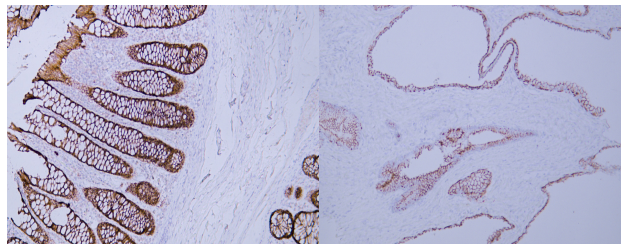
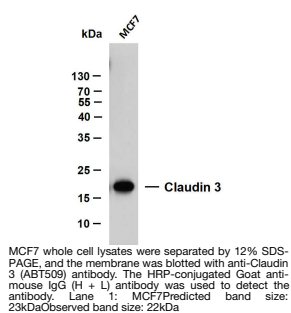
Product Type	Primary antibodies
Short Description	Mouse monoclonal antibody anti-Claudin-3 (150-220 aa) is suitable for use in Immunohistochemistry and Western Blot research applications.
Applications	IHC/WB
Host/Source	Mouse
Reactivity	Human/Mouse/Rat

PRODUCT PROPERTIES

Clonality	Monoclonal
Clone ID	ABT509
Concentration	
Conjugation	Unconjugated
Purification	The antibody was affinity-purified from mouse ascites by affinity-chromatography using specific immunogen.
Dilution Range	IHC-P 1:200-400 WB 1:200-1000
Formulation	Liquid in PBS pH7.2, 0.03% Proclin 300, with stabilizing protein.
Isotype	IgG2bk
Storage Instruction	Store at -20°C for up to 1 year from the date of receipt, and avoid repeat freeze-thaw cycles.

TARGET INFORMATION

Gene ID	1365
Gene Symbol	CLDN3
Uniprot ID	CLD3_HUMAN
Immunogen	Synthesized peptide derived from the human Claudin 3 at the amino acid range 150-220
Immunogen Region	150-220 aa
Specificity	The antibody can specifically recognize human Claudin 3 protein.. The antibody was also Predict react with Mouse;Rat
Immunogen Sequence	



Human colon tissue was stained with Anti-Claudin 3 (ABT509) Antibody

Human prostate tissue was stained with Anti-Claudin 3 (ABT509) Antibody

This product is suitable for in-vitro studies under the RESEARCH USE ONLY [RUO] licence. This product must not be used as for diagnostic or other medical purposes.
St John's Laboratory Ltd, Knowledge Dock Business Centre, University Way, London, E16 2RD | Tel: 0208 223 3081