

Anti-ABCB1 antibody (600-700 aa) [ABT252] (STJ197256)

STJ197256

GENERAL INFORMATION

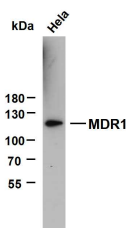
Product Type	Primary antibodies
Short Description	Mouse monoclonal antibody anti-ATP-dependent translocase ABCB1 (600-700 aa) is suitable for use in Immunohistochemistry and Western Blot research applications.
Applications	IHC/WB
Host/Source	Mouse
Reactivity	Human/Mouse/Rat

PRODUCT PROPERTIES

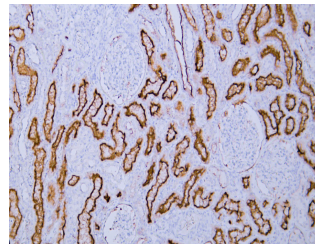
Clonality	Monoclonal
Clone ID	ABT252
Concentration	
Conjugation	Unconjugated
Purification	The antibody was affinity-purified from mouse ascites by affinity-chromatography using specific immunogen.
Dilution Range	IHC-P 1:200-400 WB 1:200-1000
Formulation	Liquid in PBS pH7.2, 0.03% Proclin 300, with stabilizing protein.
Isotype	IgG1k
Storage	Store at -20°C for up to 1 year from the date of receipt, and avoid repeat freeze-thaw cycles.
Instruction	

TARGET INFORMATION

Gene ID	5243
Gene Symbol	ABCB1
Uniprot ID	MDR1_HUMAN
Immunogen	Synthesized peptide derived from the human MDR1 at the amino acid range 600-700
Immunogen Region	600-700 aa
Specificity	The antibody can specifically recognize human MDR1 protein.
Immunogen Sequence	



HeLa whole cell lysates were separated by 6% SDS-PAGE, and the membrane was blotted with anti-MDR1 (ABT252) antibody. The HRP-conjugated Goat anti-mouse IgG (H + L) antibody was used to detect the antibody. Lane 1: HeLa. Predicted band size: 141kDa. Observed band size: 120kDa.



Human kidney tissue was stained with Anti-MDR1 (ABT252) Antibody

This product is suitable for in-vitro studies under the RESEARCH USE ONLY [RUO] licence. This product must not be used as for diagnostic or other medical purposes.
St John's Laboratory Ltd, Knowledge Dock Business Centre, University Way, London, E16 2RD | Tel: 0208 223 3081