

Anti-DES antibody (400-470 aa) [ABT168] (STJ197254)

STJ197254

GENERAL INFORMATION

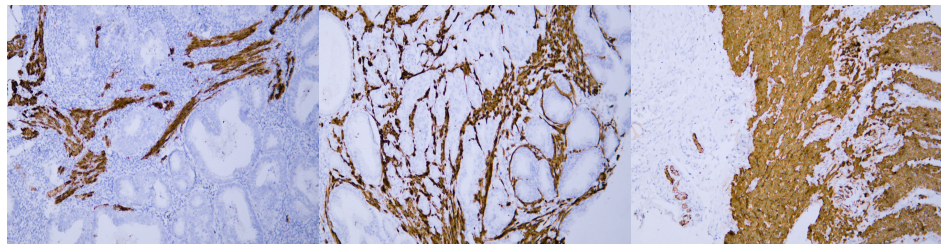
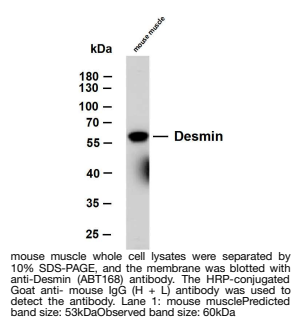
| | |
|--------------------------|--|
| Product Type | Primary antibodies |
| Short Description | Mouse monoclonal antibody anti-Desmin (400-470 aa) is suitable for use in Immunohistochemistry and Western Blot research applications. |
| Applications | IHC/WB |
| Host/Source | Mouse |
| Reactivity | Human/Mouse/Rat |

PRODUCT PROPERTIES

| | |
|----------------------------|--|
| Clonality | Monoclonal |
| Clone ID | ABT168 |
| Concentration | |
| Conjugation | Unconjugated |
| Purification | The antibody was affinity-purified from mouse ascites by affinity-chromatography using specific immunogen. |
| Dilution Range | IHC-P 1:200-400 |
| | WB 1:200-1000 |
| Formulation | Liquid in PBS pH7.2, 0.03% Proclin 300, with stabilizing protein. |
| Isotype | IgG2bk |
| Storage Instruction | Store at -20°C for up to 1 year from the date of receipt, and avoid repeat freeze-thaw cycles. |

TARGET INFORMATION

| | |
|---------------------------|---|
| Gene ID | 1674 |
| Gene Symbol | DES |
| Uniprot ID | DESM_HUMAN |
| Immunogen | Synthesized peptide derived from the human Desmin at the amino acid range 400-470 |
| Immunogen Region | 400-470 aa |
| Specificity | The antibody can specifically recognize human Desmin protein. |
| Immunogen Sequence | |



Human endometrial adenocarcinoma tissue was stained with Anti-Desmin (ABT168) Antibody

Human prostatic adenocarcinoma tissue was stained with Anti-Desmin (ABT168) Antibody

Human smooth muscle tissue was stained with Anti-Desmin (ABT168) Antibody

This product is suitable for in-vitro studies under the RESEARCH USE ONLY [RUO] licence. This product must not be used as for diagnostic or other medical purposes.
St John's Laboratory Ltd, Knowledge Dock Business Centre, University Way, London, E16 2RD | Tel: 0208 223 3081