

Anti-COL1A2 antibody (1200-1464 aa) [ABT162] (STJ197220)

STJ197220

GENERAL INFORMATION

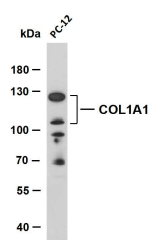
Product Type	Primary antibodies
Short Description	Mouse monoclonal antibody anti-Collagen alpha-1(I) chain (1200-1464 aa) is suitable for use in Immunohistochemistry, Western Blot and Immunofluorescence research applications.
Applications	IHC/WB/IF
Host/Source	Mouse
Reactivity	Human/Mouse/Rat

PRODUCT PROPERTIES

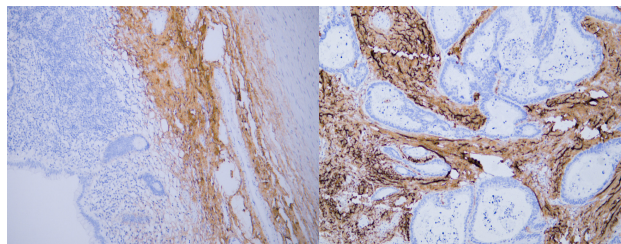
Clonality	Monoclonal
Clone ID	ABT162
Concentration	
Conjugation	Unconjugated
Purification	The antibody was affinity-purified from mouse ascites by affinity-chromatography using specific immunogen.
Dilution Range	IHC-P 1:100-500 WB 1:200-1000 IF 1:100-500
Formulation	Liquid in PBS containing 50% Glycerol, 0.5% BSA and 0.02% Sodium Azide.
Isotype	IgG2bk
Storage Instruction	Store at -20°C for up to 1 year from the date of receipt, and avoid repeat freeze-thaw cycles.

TARGET INFORMATION

Gene ID	1277
Gene Symbol	COL1A1
Uniprot ID	CO1A1_HUMAN
Immunogen	Synthesized peptide derived from the human Collagen Type I at the amino acid range 1200-1464
Immunogen Region	1200-1464 aa
Specificity	The antibody can specifically recognize human Collagen Type I protein, collagen types II, III, IV and V do not respond to the antibody.
Immunogen Sequence	



PC-12 whole cell lysates were separated by 8% SDS-PAGE, and the membrane was blotted with anti-Collagen alpha-1(I) chain (ABT162) antibody. The HRP-conjugated Goat anti-mouse IgG (H + L) antibody was used to detect the antibody. Lane 1: PC-12 Predicted band size: 139, 115kDa Observed band size: 125, 105kDa



Human appendix tissue was stained with Anti-Collagen Type I (ABT162) Antibody

Human colon carcinoma tissue was stained with Anti-Collagen Type I (ABT162) Antibody

This product is suitable for in-vitro studies under the RESEARCH USE ONLY [RUO] licence. This product must not be used as for diagnostic or other medical purposes.
St John's Laboratory Ltd, Knowledge Dock Business Centre, University Way, London, E16 2RD | Tel: 0208 223 3081