

## Anti-TOP2A antibody (1400-1531 aa) [ABT272] (STJ197194)

STJ197194

### GENERAL INFORMATION

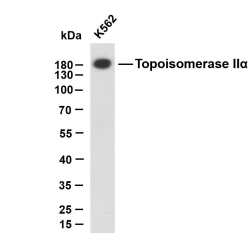
<b>Product Type</b>	Primary antibodies
<b>Short Description</b>	Mouse monoclonal antibody anti-DNA topoisomerase 2-alpha (1400-1531 aa) is suitable for use in Immunohistochemistry, Western Blot and Immunofluorescence research applications.
<b>Applications</b>	IHC/WB/IF
<b>Host/Source</b>	Mouse
<b>Reactivity</b>	Human/Mouse/Rat

### PRODUCT PROPERTIES

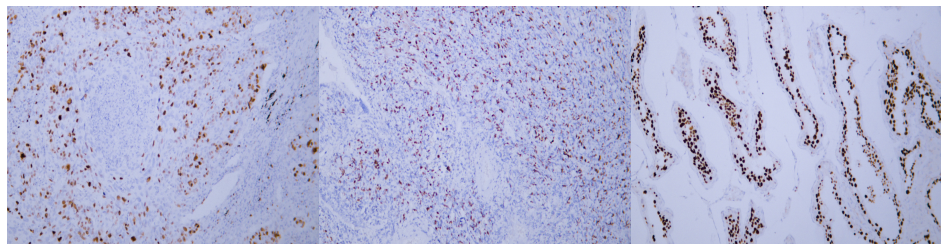
<b>Clonality</b>	Monoclonal
<b>Clone ID</b>	ABT272
<b>Concentration</b>	
<b>Conjugation</b>	Unconjugated
<b>Purification</b>	The antibody was affinity-purified from mouse ascites by affinity-chromatography using specific immunogen.
<b>Dilution Range</b>	IHC-P 1:100-500 WB 1:200-1000 IF 1:100-500
<b>Formulation</b>	Liquid in PBS containing 50% Glycerol, 0.5% BSA and 0.02% Sodium Azide.
<b>Isotype</b>	IgG1k
<b>Storage Instruction</b>	Store at -20°C for up to 1 year from the date of receipt, and avoid repeat freeze-thaw cycles.

### TARGET INFORMATION

<b>Gene ID</b>	7153
<b>Gene Symbol</b>	TOP2A
<b>Uniprot ID</b>	TOP2A_HUMAN
<b>Immunogen</b>	Synthesized peptide derived from the human Topoisomerase II Alpha at the amino acid range 1400-1531
<b>Immunogen Region</b>	1400-1531 aa
<b>Specificity</b>	The antibody can specifically recognize human Topoisomerase II Alpha protein.
<b>Immunogen Sequence</b>	



K562 whole cell lysates were separated by 10% SDS-PAGE, and the membrane was blotted with anti-Topoisomerase II $\alpha$  (ABT272) antibody. The HRP-conjugated Goat anti-mouse IgG (H + L) antibody was used to detect the antibody. Lane 1: K562 Predicted band size: 174kDa Observed band size: 174kDa



Human lung squamous cell carcinoma tissue was stained with Anti-Topoisomerase II $\alpha$  (ABT272) Antibody

Human lymphoma tissue was stained with Anti-Topoisomerase II $\alpha$  (ABT272) Antibody

Human seminoma tissue was stained with Anti-Topoisomerase II $\alpha$  (ABT272) Antibody

This product is suitable for in-vitro studies under the RESEARCH USE ONLY [RUO] licence. This product must not be used as for diagnostic or other medical purposes.  
St John's Laboratory Ltd, Knowledge Dock Business Centre, University Way, London, E16 2RD | Tel: 0208 223 3081