

## Anti-TCL1A antibody (50-114 aa) [ABT234] (STJ197191)

STJ197191

### GENERAL INFORMATION

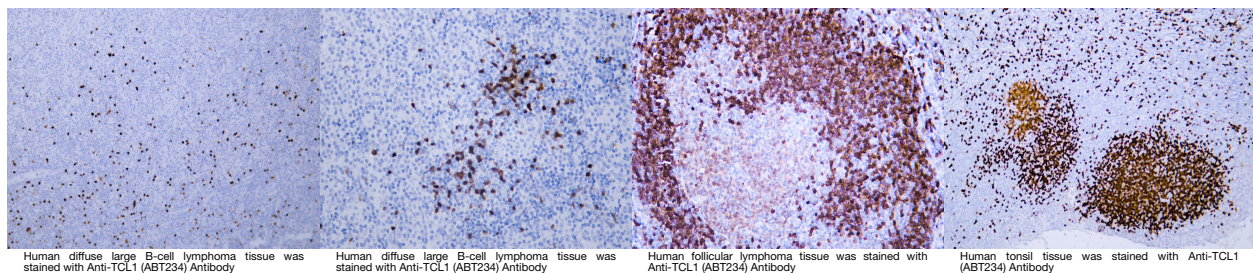
<b>Product Type</b>	Primary antibodies
<b>Short Description</b>	Mouse monoclonal antibody anti-T-cell leukemia/lymphoma protein 1A (50-114 aa) is suitable for use in Immunohistochemistry and Immunofluorescence research applications.
<b>Applications</b>	IHC/IF
<b>Host/Source</b>	Mouse
<b>Reactivity</b>	Human

### PRODUCT PROPERTIES

<b>Clonality</b>	Monoclonal
<b>Clone ID</b>	ABT234
<b>Concentration</b>	
<b>Conjugation</b>	Unconjugated
<b>Purification</b>	The antibody was affinity-purified from mouse ascites by affinity-chromatography using specific immunogen.
<b>Dilution Range</b>	IHC-P 1:100-500 IF 1:100-500
<b>Formulation</b>	Liquid in PBS containing 50% Glycerol, 0.5% BSA and 0.02% Sodium Azide.
<b>Isotype</b>	IgG2ak
<b>Storage</b>	Store at -20°C for up to 1 year from the date of receipt, and avoid repeat freeze-thaw cycles.
<b>Instruction</b>	

### TARGET INFORMATION

<b>Gene ID</b>	8115
<b>Gene Symbol</b>	TCL1A
<b>Uniprot ID</b>	TCL1A_HUMAN
<b>Immunogen</b>	Synthesized peptide derived from the human TCL1 at the amino acid range 50-114
<b>Immunogen Region</b>	50-114 aa
<b>Specificity</b>	The antibody can specifically recognize human TCL1 protein.
<b>Immunogen Sequence</b>	



This product is suitable for in-vitro studies under the RESEARCH USE ONLY [RUO] licence. This product must not be used as for diagnostic or other medical purposes.  
St John's Laboratory Ltd, Knowledge Dock Business Centre, University Way, London, E16 2RD | Tel: 0208 223 3081