

Anti-KLK3 antibody (100-200 aa) [ABT114] (STJ197185)

STJ197185

GENERAL INFORMATION

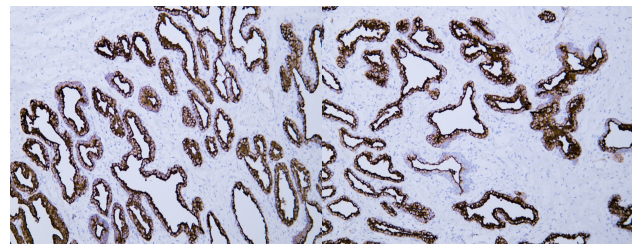
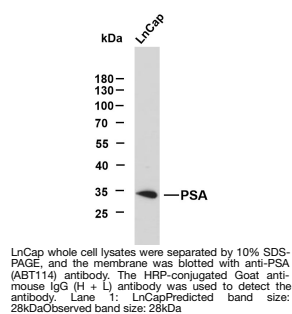
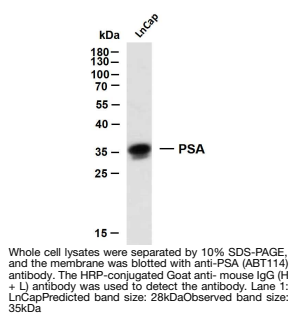
Product Type	Primary antibodies
Short Description	Mouse monoclonal antibody anti-Prostate-specific antigen (100-200 aa) is suitable for use in Immunohistochemistry, Western Blot and Immunofluorescence research applications.
Applications	IHC/WB/IF
Host/Source	Mouse
Reactivity	Human/Mouse/Rat

PRODUCT PROPERTIES

Clonality	Monoclonal
Clone ID	ABT114
Concentration	
Conjugation	Unconjugated
Purification	The antibody was affinity-purified from mouse ascites by affinity-chromatography using specific immunogen.
Dilution Range	IHC-P 1:100-500 WB 1:200-1000 IF 1:100-500
Formulation	Liquid in PBS containing 50% Glycerol, 0.5% BSA and 0.02% Sodium Azide.
Isotype	IgG2bk
Storage Instruction	Store at -20°C for up to 1 year from the date of receipt, and avoid repeat freeze-thaw cycles.

TARGET INFORMATION

Gene ID	354
Gene Symbol	KLK3
Uniprot ID	KLK3_HUMAN
Immunogen	Synthesized peptide derived from the human PSA at the amino acid range 100-200
Immunogen Region	100-200 aa
Specificity	The antibody can specifically recognize human PSA protein.. The antibody was also Predict react with Mouse;Rat
Immunogen Sequence	



Human prostate tissue was stained with Anti-Prostate-Specific Antigen (ABT114) Antibody

Human prostate tissue was stained with Anti-Prostate-Specific Antigen (ABT114) Antibody