

Anti-PGR antibody (200-300 aa) [ABT005] (STJ197183)

STJ197183

GENERAL INFORMATION

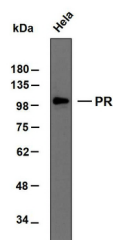
Product Type	Primary antibodies
Short Description	Mouse monoclonal antibody anti-Progesterone receptor (200-300 aa) is suitable for use in Immunohistochemistry, Immunofluorescence and Western Blot research applications.
Applications	IHC/IF/WB
Host/Source	Mouse
Reactivity	Human/Mouse/Rat

PRODUCT PROPERTIES

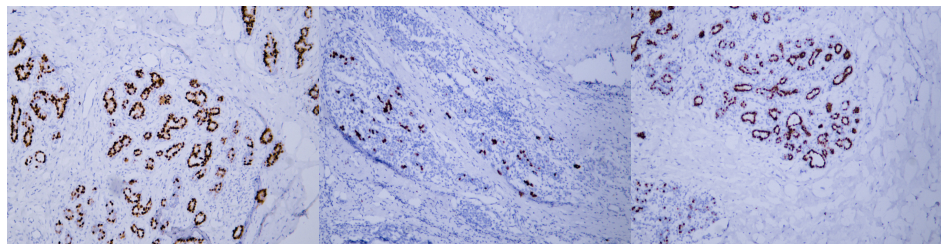
Clonality	Monoclonal
Clone ID	ABT005
Concentration	
Conjugation	Unconjugated
Purification	The antibody was affinity-purified from mouse ascites by affinity-chromatography using specific immunogen.
Dilution Range	IHC-P 1:100-500 WB 1:200-1000 IF 1:100-500
Formulation	Liquid in PBS containing 50% Glycerol, 0.5% BSA and 0.02% Sodium Azide.
Isotype	IgG1k
Storage Instruction	Store at -20°C for up to 1 year from the date of receipt, and avoid repeat freeze-thaw cycles.

TARGET INFORMATION

Gene ID	5241
Gene Symbol	PGR
Uniprot ID	PRGR_HUMAN
Immunogen	Synthesized peptide derived from the human Progesterone Receptor (PR) at the amino acid range 200-300
Immunogen Region	200-300 aa
Specificity	This antibody detects endogenous levels of Progesterone Receptor (PR) at Human. The antibody was also Predict react with Mouse;Rat
Immunogen Sequence	



Whole cell lysates of HeLa were separated by 8% SDS-PAGE, and the membrane was blotted with anti-PR antibody. The HRP-conjugated anti-mouse IgG antibody was used to detect the antibody. Predicted band size: 99 kDa



Human breast carcinoma tissue was stained with Anti-Progesterone Receptor (ABT005) Antibody

Human breast carcinoma tissue was stained with Anti-Progesterone Receptor (ABT005) Antibody

Human breast carcinoma tissue was stained with Anti-Progesterone Receptor (ABT005) Antibody

This product is suitable for in-vitro studies under the RESEARCH USE ONLY [RUO] licence. This product must not be used as for diagnostic or other medical purposes.
St John's Laboratory Ltd, Knowledge Dock Business Centre, University Way, London, E16 2RD | Tel: 0208 223 3081