

Anti-LYZ antibody (1-100 aa) [ABT191] (STJ197165)

STJ197165

GENERAL INFORMATION

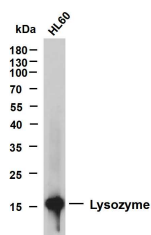
Product Type	Primary antibodies
Short Description	Mouse monoclonal antibody anti-Lysozyme C (1-100 aa) is suitable for use in Immunohistochemistry, Western Blot and Immunofluorescence research applications.
Applications	IHC/WB/IF
Host/Source	Mouse
Reactivity	Human/Mouse/Rat

PRODUCT PROPERTIES

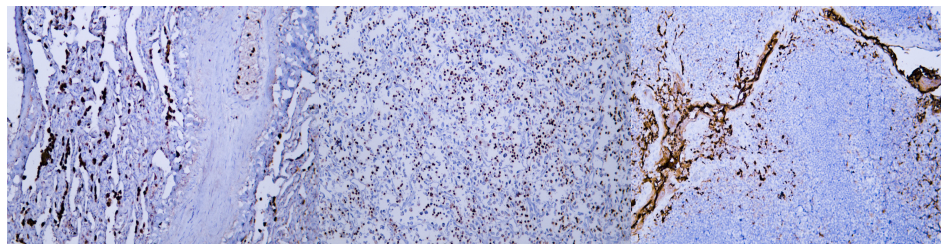
Clonality	Monoclonal
Clone ID	ABT191
Concentration	
Conjugation	Unconjugated
Purification	The antibody was affinity-purified from mouse ascites by affinity-chromatography using specific immunogen.
Dilution Range	IHC-P 1:100-500 WB 1:200-1000 IF 1:100-500
Formulation	Liquid in PBS containing 50% Glycerol, 0.5% BSA and 0.02% Sodium Azide.
Isotype	IgG3k
Storage Instruction	Store at -20°C for up to 1 year from the date of receipt, and avoid repeat freeze-thaw cycles.

TARGET INFORMATION

Gene ID	4069
Gene Symbol	LYZ
Uniprot ID	LYSC_HUMAN
Immunogen	Synthesized peptide derived from the human Lysozyme at the amino acid range 1-100
Immunogen Region	1-100 aa
Specificity	The antibody can specifically recognize human Lysozyme protein.
Immunogen Sequence	



HL60 whole cell lysates were separated by 12% SDS-PAGE, and the membrane was blotted with anti-Lysozyme (ABT191) antibody. The HRP-conjugated Goat anti-mouse IgG (H + L) antibody was used to detect the antibody. Lane 1: HL60 Predicted band size: 17kDa Observed band size: 17kDa



Human lung tissue was stained with Anti-Lysozyme (ABT191) Antibody

Human malignant fibrous histiocytoma tissue was stained with Anti-Lysozyme (ABT191) Antibody

Human tonsil tissue was stained with Anti-Lysozyme (ABT191) Antibody

This product is suitable for in-vitro studies under the RESEARCH USE ONLY [RUO] licence. This product must not be used as for diagnostic or other medical purposes.
St John's Laboratory Ltd, Knowledge Dock Business Centre, University Way, London, E16 2RD | Tel: 0208 223 3081