

## Anti-KRT4 antibody (400-534 aa) [ABT061] (STJ197149)

STJ197149

### GENERAL INFORMATION

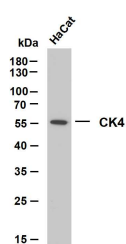
<b>Product Type</b>	Primary antibodies
<b>Short Description</b>	Mouse monoclonal antibody anti-Keratin, type II cytoskeletal 4 (400-534 aa) is suitable for use in Immunohistochemistry and Western Blot research applications.
<b>Applications</b>	IHC/WB
<b>Host/Source</b>	Mouse
<b>Reactivity</b>	Human

### PRODUCT PROPERTIES

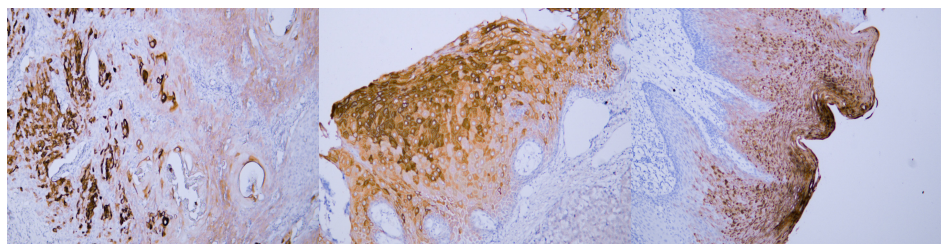
<b>Clonality</b>	Monoclonal
<b>Clone ID</b>	ABT061
<b>Concentration</b>	
<b>Conjugation</b>	Unconjugated
<b>Purification</b>	The antibody was affinity-purified from mouse ascites by affinity-chromatography using specific immunogen.
<b>Dilution Range</b>	IHC-P 1:100-500 WB 1:200-1000 IF 1:100-500
<b>Formulation</b>	Liquid in PBS containing 50% Glycerol, 0.5% BSA and 0.02% Sodium Azide.
<b>Isotype</b>	IgG1k
<b>Storage Instruction</b>	Store at -20°C for up to 1 year from the date of receipt, and avoid repeat freeze-thaw cycles.

### TARGET INFORMATION

<b>Gene ID</b>	3851
<b>Gene Symbol</b>	KRT4
<b>Uniprot ID</b>	K2C4_HUMAN
<b>Immunogen</b>	Synthesized peptide derived from the human CK4 at the amino acid range 400-534
<b>Immunogen Region</b>	400-534 aa
<b>Specificity</b>	The antibody can specifically recognize human CK4 protein, and shows no cross reaction with CK5, 6, 7, 8, 14, 15, 17, 20.
<b>Immunogen Sequence</b>	



HaCat whole cell lysates were separated by 10% SDS-PAGE, and the membrane was blotted with anti-CK4 (ABT061) antibody. The HRP-conjugated Goat anti-mouse IgG (H + L) antibody was used to detect the antibody. Lane 1: HaCat Predicted band size: 57kDa Observed band size: 57kDa



Human cervical squamous cell carcinoma tissue was stained with Anti-Cytokeratin 4 (ABT061) Antibody

Human esophageal squamous cell carcinoma tissue was stained with Anti-Cytokeratin 4 (ABT061) Antibody

Human oral squamous cell carcinoma tissue was stained with Anti-Cytokeratin 4 (ABT061) Antibody

This product is suitable for in-vitro studies under the RESEARCH USE ONLY [RUO] licence. This product must not be used as for diagnostic or other medical purposes.  
St John's Laboratory Ltd, Knowledge Dock Business Centre, University Way, London, E16 2RD | Tel: 0208 223 3081