

## Anti-KRT19 antibody (300-400 aa) [ABT050] (STJ197143)

STJ197143

### GENERAL INFORMATION

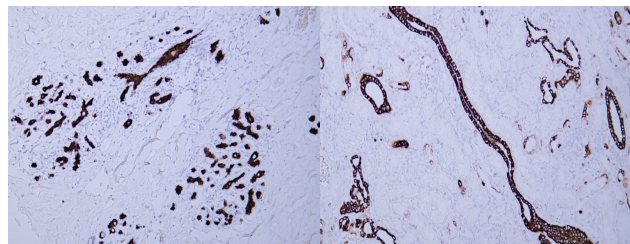
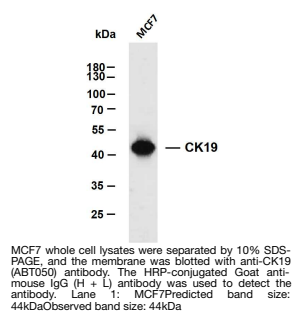
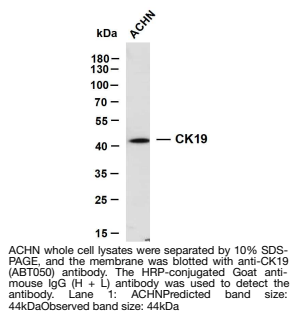
|                          |   |
|--------------------------|---|
| <b>Product Type</b>      | Primary antibodies  |
| <b>Short Description</b> | Mouse monoclonal antibody anti-Keratin, type I cytoskeletal 19 (300-400 aa) is suitable for use in Immunohistochemistry, Western Blot and Immunofluorescence research applications. |
| <b>Applications</b>      | IHC/WB/IF   |
| <b>Host/Source</b>       | Mouse   |
| <b>Reactivity</b>        | Human   |

### PRODUCT PROPERTIES

|                            |  |
|----------------------------|--|
| <b>Clonality</b>           | Monoclonal   |
| <b>Clone ID</b>            | ABT050   |
| <b>Concentration</b>       |  |
| <b>Conjugation</b>         | Unconjugated   |
| <b>Purification</b>        | The antibody was affinity-purified from mouse ascites by affinity-chromatography using specific immunogen. |
| <b>Dilution Range</b>      | IHC-P 1:100-500<br>WB 1:200-1000<br>IF 1:100-500   |
| <b>Formulation</b>         | Liquid in PBS containing 50% Glycerol, 0.5% BSA and 0.02% Sodium Azide.                                    |
| <b>Isotype</b>             | IgG2bk   |
| <b>Storage Instruction</b> | Store at -20°C for up to 1 year from the date of receipt, and avoid repeat freeze-thaw cycles.             |

### TARGET INFORMATION

|                           |   |
|---------------------------|---|
| <b>Gene ID</b>            | 3880  |
| <b>Gene Symbol</b>        | KRT19   |
| <b>Uniprot ID</b>         | K1C19_HUMAN   |
| <b>Immunogen</b>          | Synthesized peptide derived from the human CK19 at the amino acid range 300-400   |
| <b>Immunogen Region</b>   | 300-400 aa  |
| <b>Specificity</b>        | The antibody can specifically recognize human CK19 protein, and shows no cross reaction with CK1, 5, 6, 7, 8, 10, 13, 14, 15, 17, 18, 20. |
| <b>Immunogen Sequence</b> |   |



Human breast tissue was stained with Anti-Cytokeratin 19 (ABT050) Antibody

Human kidney tissue was stained with Anti-Cytokeratin 19 (ABT050) Antibody

This product is suitable for in-vitro studies under the RESEARCH USE ONLY [RUO] licence. This product must not be used as for diagnostic or other medical purposes.  
St John's Laboratory Ltd, Knowledge Dock Business Centre, University Way, London, E16 2RD | Tel: 0208 223 3081