

Anti-KRT15 antibody (350-456 aa) [ABT058] (STJ197139)

GENERAL INFORMATION

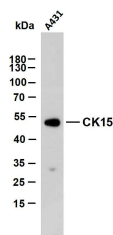
Product Type	Primary antibodies
Short Description	Mouse monoclonal antibody anti-Keratin, type I cytoskeletal 15 (350-456 aa) is suitable for use in Immunohistochemistry, Western Blot and Immunofluorescence research applications.
Applications	IHC/WB/IF
Host/Source	Mouse
Reactivity	Human

PRODUCT PROPERTIES

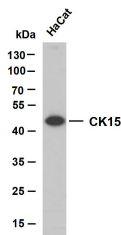
Clonality	Monoclonal
Clone ID	ABT058
Concentration	
Conjugation	Unconjugated
Purification	The antibody was affinity-purified from mouse ascites by affinity-chromatography using specific immunogen.
Dilution	IHC-P 1:100-500
Range	WB 1:200-1000 IF 1:100-500
Formulation	Liquid in PBS containing 50% Glycerol, 0.5% BSA and 0.02% Sodium Azide.
Isotype	IgG1k
Storage Instruction	Store at -20°C for up to 1 year from the date of receipt, and avoid repeat freeze-thaw cycles.

TARGET INFORMATION

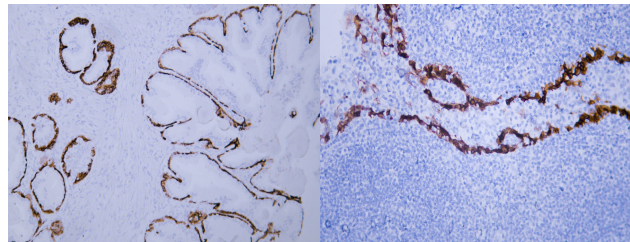
Gene ID	3866
Gene Symbol	KRT15
Uniprot ID	K1C15_HUMAN
Immunogen	Synthesized peptide derived from the human CK15 at the amino acid range 350-456
Immunogen Region	350-456 aa
Specificity	The antibody can specifically recognize human CK15 protein. In immunohistochemistry on formalin-fixed, paraffin-embedded tissue sections, the antibody specifically labels the squamous epithelial cell
Immunogen Sequence	



A431 whole cell lysates were separated by 10% SDS-PAGE, and the membrane was blotted with anti-CK15 (ABT058) antibody. The HRP-conjugated Goat anti-mouse IgG (H + L) antibody was used to detect the antibody. Lane 1: A431 Predicted band size: 49kDa Observed band size: 49kDa



Hacat whole cell lysates were separated by 10% SDS-PAGE, and the membrane was blotted with anti-CK15 (ABT058) antibody. The HRP-conjugated Goat anti-mouse IgG (H + L) antibody was used to detect the antibody. Lane 1: Hacat Predicted band size: 49kDa Observed band size: 49kDa



Human prostate tissue was stained with Anti-Cytokeratin 15 (ABT058) Antibody

Human tonsil tissue was stained with Anti-Cytokeratin 15 (ABT058) Antibody

This product is suitable for in-vitro studies under the RESEARCH USE ONLY [RUO] licence. This product must not be used as for diagnostic or other medical purposes.
St John's Laboratory Ltd, Knowledge Dock Business Centre, University Way, London, E16 2RD | Tel: 0208 223 3081