

Anti-KRT10 antibody (500-584 aa) [ABT056] (STJ197137)

STJ197137

GENERAL INFORMATION

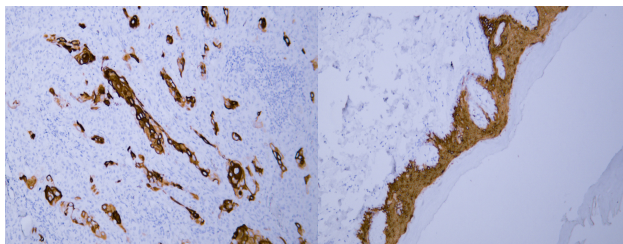
Product Type	Primary antibodies
Short Description	Mouse monoclonal antibody anti-Keratin, type I cytoskeletal 10 (500-584 aa) is suitable for use in Immunohistochemistry and Immunofluorescence research applications.
Applications	IHC/IF
Host/Source	Mouse
Reactivity	Human/Mouse/Rat

PRODUCT PROPERTIES

Clonality	Monoclonal
Clone ID	ABT056
Concentration	
Conjugation	Unconjugated
Purification	The antibody was affinity-purified from mouse ascites by affinity-chromatography using specific immunogen.
Dilution Range	IHC-P 1:100-500 IF 1:100-500
Formulation	Liquid in PBS containing 50% Glycerol, 0.5% BSA and 0.02% Sodium Azide.
Isotype	IgG1k
Storage	Store at -20°C for up to 1 year from the date of receipt, and avoid repeat freeze-thaw cycles.
Instruction	

TARGET INFORMATION

Gene ID	3858
Gene Symbol	KRT10
Uniprot ID	K1C10_HUMAN
Immunogen	Synthesized peptide derived from the human CK10 at the amino acid range 500-584
Immunogen Region	500-584 aa
Specificity	The antibody can specifically recognize human CK10 protein, and shows no cross reaction with CK4, 5, 6, 7, 8, 14, 15, 18, 19.. The antibody was also Predict react with Mouse;Rat
Immunogen Sequence	



Human cervix tissue was stained with Anti-Cytokeratin 10 (ABT056) Antibody

Human skin tissue was stained with Anti-Cytokeratin 10 (ABT056) Antibody

This product is suitable for in-vitro studies under the RESEARCH USE ONLY [RUO] licence. This product must not be used as for diagnostic or other medical purposes.
St John's Laboratory Ltd, Knowledge Dock Business Centre, University Way, London, E16 2RD | Tel: 0208 223 3081