

Anti-COL2A1 antibody (1200-1300 aa) [ABT501] (STJ197134)

STJ197134

GENERAL INFORMATION

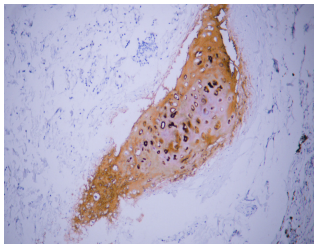
Product Type	Primary antibodies
Short Description	Mouse monoclonal antibody anti-Collagen alpha-1II chain (1200-1300 aa) is suitable for use in Immunohistochemistry and Immunofluorescence research applications.
Applications	IHC/IF
Host/Source	Mouse
Reactivity	Human/Mouse/Rat

PRODUCT PROPERTIES

Clonality	Monoclonal
Clone ID	ABT501
Concentration	
Conjugation	Unconjugated
Purification	The antibody was affinity-purified from mouse ascites by affinity-chromatography using specific immunogen.
Dilution Range	IHC-P 1:100-500 IF 1:100-500
Formulation	Liquid in PBS containing 50% Glycerol, 0.5% BSA and 0.02% Sodium Azide.
Isotype	IgG2bk
Storage	Store at -20°C for up to 1 year from the date of receipt, and avoid repeat freeze-thaw cycles.
Instruction	

TARGET INFORMATION

Gene ID	1280
Gene Symbol	COL2A1
Uniprot ID	CO2A1_HUMAN
Immunogen	Synthesized peptide derived from the human Collagen Type II at the amino acid range 1200-1300
Immunogen Region	1200-1300 aa
Specificity	The antibody can specifically recognize human Collagen Type II protein, collagen types I, III, IV and V do not respond to the antibody.. The antibody was also Predict react with Mouse;Rat
Immunogen Sequence	



Human cartilage tissue was stained with Anti-Collagen Type II (ABT501) Antibody

This product is suitable for in-vitro studies under the RESEARCH USE ONLY [RUO] licence. This product must not be used as for diagnostic or other medical purposes.
St John's Laboratory Ltd, Knowledge Dock Business Centre, University Way, London, E16 2RD | Tel: 0208 223 3081