

Anti-CD38 antibody (200-300 aa) [ABT298] (STJ197120)

STJ197120

GENERAL INFORMATION

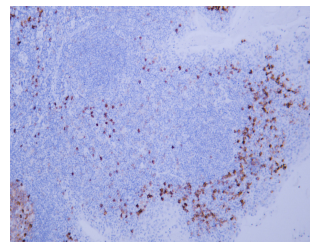
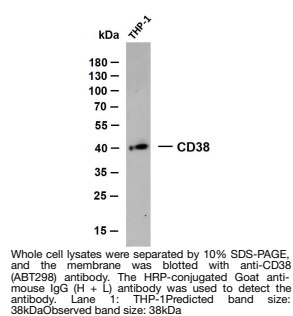
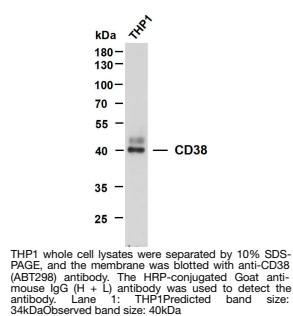
Product Type	Primary antibodies
Short Description	Mouse monoclonal antibody anti-ADP-ribosyl cyclase/cyclic ADP-ribose hydrolase 1 (200-300 aa) is suitable for use in Immunohistochemistry, Immunofluorescence and Western Blot research applications.
Applications	IHC/IF/WB
Host/Source	Mouse
Reactivity	Human

PRODUCT PROPERTIES

Clonality	Monoclonal
Clone ID	ABT298
Concentration	
Conjugation	Unconjugated
Purification	The antibody was affinity-purified from mouse ascites by affinity-chromatography using specific immunogen.
Dilution	IHC-P 1:100-500
Range	WB 1:200-1000 IF 1:100-500
Formulation	Liquid in PBS containing 50% Glycerol, 0.5% BSA and 0.02% Sodium Azide.
Isotype	IgG2bk
Storage Instruction	Store at -20°C for up to 1 year from the date of receipt, and avoid repeat freeze-thaw cycles.

TARGET INFORMATION

Gene ID	952
Gene Symbol	CD38
Uniprot ID	CD38_HUMAN
Immunogen	Synthesized peptide derived from the human CD38 at the amino acid range 200-300
Immunogen Region	200-300 aa
Specificity	The antibody can specifically recognize human CD38 protein.
Immunogen Sequence	



Human tonsil tissue was stained with Anti-CD38 (ABT298) Antibody

This product is suitable for in-vitro studies under the RESEARCH USE ONLY [RUO] licence. This product must not be used as for diagnostic or other medical purposes.
St John's Laboratory Ltd, Knowledge Dock Business Centre, University Way, London, E16 2RD | Tel: 0208 223 3081