

Anti-PAN-CALD1 antibody (100-200 aa) [ABT125] (STJ197106)

STJ197106

GENERAL INFORMATION

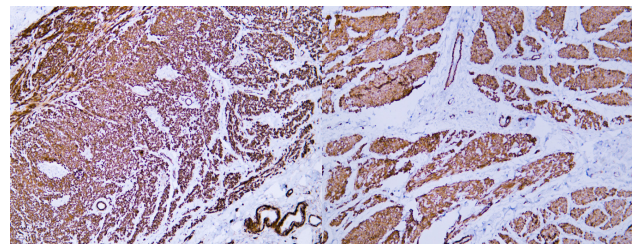
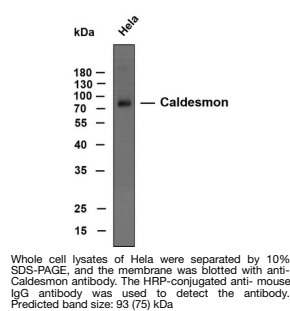
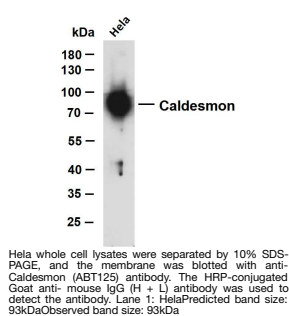
Product Type	Primary antibodies
Short Description	Mouse monoclonal antibody anti-PAN-Caldesmon (100-200 aa) is suitable for use in Immunohistochemistry, Western Blot and Immunofluorescence research applications.
Applications	IHC/WB/IF
Host/Source	Mouse
Reactivity	Human

PRODUCT PROPERTIES

Clonality	Monoclonal
Clone ID	ABT125
Concentration	
Conjugation	Unconjugated
Purification	The antibody was affinity-purified from mouse ascites by affinity-chromatography using specific immunogen.
Dilution Range	IHC-P 1:100-500
	WB 1:200-1000
	IF 1:100-500
Formulation	Liquid in PBS containing 50% Glycerol, 0.5% BSA and 0.02% Sodium Azide.
Isotype	IgG2ak
Storage Instruction	Store at -20°C for up to 1 year from the date of receipt, and avoid repeat freeze-thaw cycles.

TARGET INFORMATION

Gene ID	800
Gene Symbol	CALD1
Uniprot ID	CALD1_HUMAN
Immunogen	Synthesized peptide derived from the human Caldesmon pan at the amino acid range 100-200
Immunogen Region	100-200 aa
Specificity	The antibody can recognize human h-caldesmon and l-caldesmon protein. In western blotting, the antibody labels a 93kDa band.
Immunogen Sequence	



Human appendix tissue was stained with anti-Caldesmon (ABT125) antibody.

Human smooth muscle tissue was stained with anti-Caldesmon (ABT125) antibody.

This product is suitable for in-vitro studies under the RESEARCH USE ONLY [RUO] licence. This product must not be used as for diagnostic or other medical purposes.
St John's Laboratory Ltd, Knowledge Dock Business Centre, University Way, London, E16 2RD | Tel: 0208 223 3081