

Anti-GSTP1 antibody (150-210 aa) [ABT-GSTP1] (STJ197049)

STJ197049

GENERAL INFORMATION

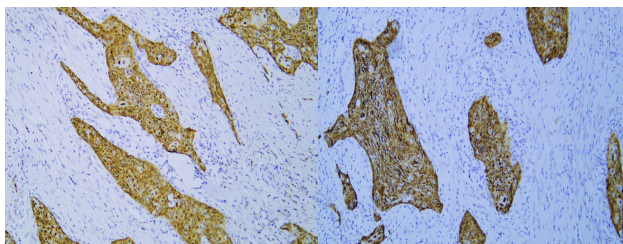
Product Type	Primary antibodies
Short Description	Mouse monoclonal antibody anti-Glutathione S-transferase P (150-210 aa) is suitable for use in Western Blot, Immunohistochemistry and Immunofluorescence research applications.
Applications	WB/IHC/IF
Host/Source	Mouse
Reactivity	Human

PRODUCT PROPERTIES

Clonality	Monoclonal
Clone ID	ABT-GSTP1
Concentration	
Conjugation	Unconjugated
Purification	The antibody was affinity-purified from mouse ascites by affinity-chromatography using specific immunogen.
Dilution Range	IHC-P 1:100-500 WB 1:100-2000 IF 1:50-200
Formulation	Liquid in PBS containing 50% Glycerol, 0.5% BSA and 0.02% Sodium Azide.
Isotype	
Storage	Store at -20°C for up to 1 year from the date of receipt, and avoid repeat freeze-thaw cycles.
Instruction	

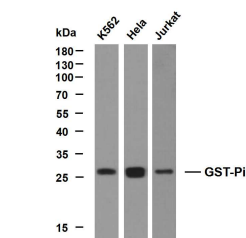
TARGET INFORMATION

Gene ID	2950
Gene Symbol	GSTP1
Uniprot ID	GSTP1_HUMAN
Immunogen	Synthesized peptide derived from the human GST-Pi at the amino acid range 150-210
Immunogen Region	150-210 aa
Specificity	This antibody detects endogenous levels of human GST-Pi, TRIS-EDTA of pH9.0 was used for Heat-induced epitope retrieval (HIER)
Immunogen Sequence	



Human esophageal squamous cell carcinoma tissue was stained with Anti-GST-Pi (ABT-GSTP1) Antibody

Human esophageal squamous cell carcinoma tissue was stained with Anti-GST-Pi (ABT-GSTP1) Antibody



Various whole cell lysates were separated by 12% SDS-PAGE, and the membrane was blotted with anti-GST-Pi (ABT-GSTP1) antibody. The HRP-conjugated Goat anti-mouse IgG (H + L) antibody was used to detect the antibody. Lane 1: K562 Lane 2: HeLa Lane 3: Jurkat Predicted band size: 26kDa Observed band size: 26kDa

This product is suitable for in-vitro studies under the RESEARCH USE ONLY [RUO] licence. This product must not be used as for diagnostic or other medical purposes.
St John's Laboratory Ltd, Knowledge Dock Business Centre, University Way, London, E16 2RD | Tel: 0208 223 3081