

Anti-ENO2 antibody (300-434 aa) [PT2281] (STJ197039)

STJ197039

GENERAL INFORMATION

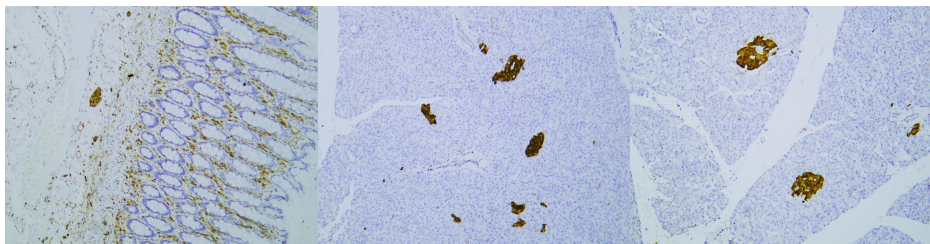
Product Type	Primary antibodies
Short Description	Mouse monoclonal antibody anti-Gamma-enolase (300-434 aa) is suitable for use in Immunohistochemistry and Western Blot research applications.
Applications	IHC/WB
Host/Source	Mouse
Reactivity	Human/Mouse/Rat

PRODUCT PROPERTIES

Clonality	Monoclonal
Clone ID	PT2281
Concentration	
Conjugation	Unconjugated
Purification	The antibody was affinity-purified from mouse ascites by affinity-chromatography using specific immunogen.
Dilution	IHC-P 1:100-500
Range	WB 1:200-1000
Formulation	Liquid in PBS containing 50% Glycerol, 0.5% BSA and 0.02% Sodium Azide.
Isotype	IgG1k
Storage	Store at -20°C for up to 1 year from the date of receipt, and avoid repeat freeze-thaw cycles.
Instruction	

TARGET INFORMATION

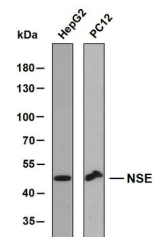
Gene ID	2026
Gene Symbol	ENO2
Uniprot ID	ENOG_HUMAN
Immunogen	Synthesized peptide derived from the human Neuron-Specific Enolase (NSE) at the amino acid range 300-434
Immunogen Region	300-434 aa
Specificity	This antibody detects endogenous levels of human Neuron-Specific Enolase (NSE). Heat-induced epitope retrieval (HIER) TRIS-EDTA of pH9.0 was highly recommended as antigen repair method in paraffin sect
Immunogen Sequence	



Human colon tissue was stained with Anti-NSE (PT2281) Antibody

Human pancreas tissue was stained with Anti-NSE (PT2281) Antibody

Human pancreas tissue was stained with Anti-NSE (PT2281) Antibody



Various whole cell lysates were separated by 8% SDS-PAGE, and the membrane was blotted with anti-NSE antibody. The HRP-conjugated anti-mouse IgG antibody was used to detect the antibody. Predicted band size: 47 kDa

This product is suitable for in-vitro studies under the RESEARCH USE ONLY [RUO] licence. This product must not be used as for diagnostic or other medical purposes.
St John's Laboratory Ltd, Knowledge Dock Business Centre, University Way, London, E16 2RD | Tel: 0208 223 3081