

Anti-CLDN1 antibody (150-211 aa) [ABT-CLD1] (STJ197035)

GENERAL INFORMATION

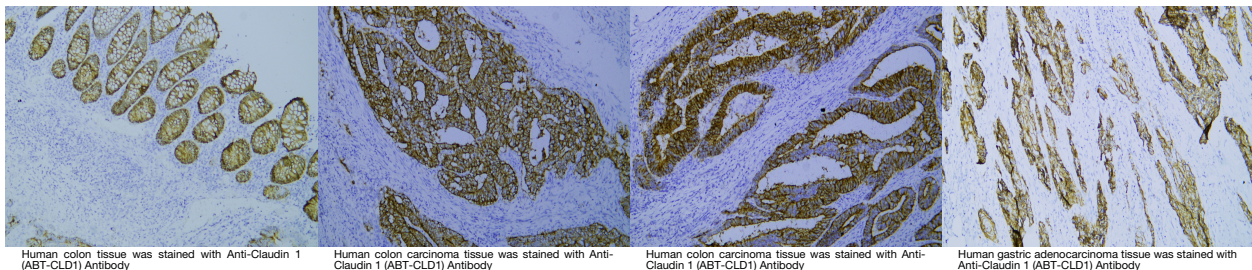
Product Type	Primary antibodies
Short Description	Mouse monoclonal antibody anti-Claudin-1 (150-211 aa) is suitable for use in Immunohistochemistry, Immunofluorescence and Western Blot research applications.
Applications	IHC/IF/WB
Host/Source	Mouse
Reactivity	Human/Mouse/Rat

PRODUCT PROPERTIES

Clonality	Monoclonal
Clone ID	ABT-CLD1
Concentration	
Conjugation	Unconjugated
Purification	The antibody was affinity-purified from mouse ascites by affinity-chromatography using specific immunogen.
Dilution	IHC-P 1:100-300
Range	WB 1:500-2000 IF 1:50-200
Formulation	Liquid in PBS containing 50% Glycerol, 0.5% BSA and 0.02% Sodium Azide.
Isotype	IgG1k
Storage Instruction	Store at -20°C for up to 1 year from the date of receipt, and avoid repeat freeze-thaw cycles.

TARGET INFORMATION

Gene ID	9076
Gene Symbol	CLDN1
Uniprot ID	CLD1_HUMAN
Immunogen	Synthesized peptide derived from the human Claudin 1 at the amino acid range 150-211
Immunogen Region	150-211 aa
Specificity	This antibody detects endogenous levels of human Claudin 1. Heat-induced epitope retrieval (HIER) TRIS-EDTA of pH9.0 was highly recommended as antigen repair method in paraffin section. The antibody w
Immunogen Sequence	



This product is suitable for in-vitro studies under the RESEARCH USE ONLY [RUO] licence. This product must not be used as for diagnostic or other medical purposes.
St John's Laboratory Ltd, Knowledge Dock Business Centre, University Way, London, E16 2RD | Tel: 0208 223 3081