

Anti-MSH2 antibody (600-700 aa) [ABT-MSH2] (STJ197034)

GENERAL INFORMATION

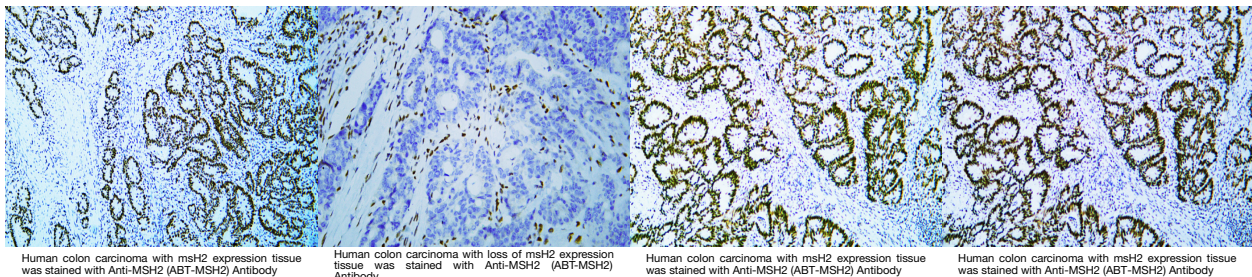
| | |
|--------------------------|--|
| Product Type | Primary antibodies |
| Short Description | Mouse monoclonal antibody anti-DNA mismatch repair protein Msh2 (600-700 aa) is suitable for use in Western Blot, Immunohistochemistry and Immunofluorescence research applications. |
| Applications | WB/IHC/IF |
| Host/Source | Mouse |
| Reactivity | Human |

PRODUCT PROPERTIES

| | |
|----------------------|--|
| Clonality | Monoclonal |
| Clone ID | ABT-MSH2 |
| Concentration | |
| Conjugation | Unconjugated |
| Purification | The antibody was affinity-purified from mouse ascites by affinity-chromatography using specific immunogen. |
| Dilution | IHC-P 1:100-500 |
| Range | WB 1:100-2000 IF 1:50-200 |
| Formulation | Liquid in PBS containing 50% Glycerol, 0.5% BSA and 0.02% Sodium Azide. |
| Isotype | IgG1k |
| Storage | Store at -20°C for up to 1 year from the date of receipt, and avoid repeat freeze-thaw cycles. |
| Instruction | |

TARGET INFORMATION

| | |
|---------------------------|---|
| Gene ID | 4436 |
| Gene Symbol | MSH2 |
| Uniprot ID | MSH2_HUMAN |
| Immunogen | Synthesized peptide derived from the human MutS Protein Homolog 2 (MSH2) at the amino acid range 600-700 |
| Immunogen Region | 600-700 aa |
| Specificity | This antibody detects endogenous levels of human MutS Protein Homolog 2 (MSH2). Heat-induced epitope retrieval (HIER) TRIS-EDTA of pH9.0 was highly recommended as antigen repair method in paraffin sect |
| Immunogen Sequence | |



This product is suitable for in-vitro studies under the RESEARCH USE ONLY [RUO] licence. This product must not be used as for diagnostic or other medical purposes.
St John's Laboratory Ltd, Knowledge Dock Business Centre, University Way, London, E16 2RD | Tel: 0208 223 3081