

Anti-NAPSA antibody (100-200 aa) [ABT-ASP4] (STJ197021)

STJ197021

GENERAL INFORMATION

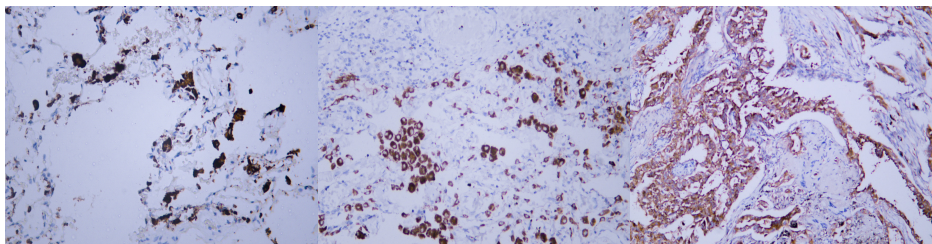
Product Type	Primary antibodies
Short Description	Mouse monoclonal antibody anti-Napsin-A (100-200 aa) is suitable for use in Immunohistochemistry and Immunofluorescence research applications.
Applications	IHC/IF
Host/Source	Mouse
Reactivity	Human/Mouse/Rat

PRODUCT PROPERTIES

Clonality	Monoclonal
Clone ID	ABT-ASP4
Concentration	
Conjugation	Unconjugated
Purification	The antibody was affinity-purified from mouse ascites by affinity-chromatography using specific immunogen.
Dilution Range	IHC-P 1:100-500 IF 1:50-200
Formulation	Liquid in PBS containing 50% Glycerol, 0.5% BSA and 0.02% Sodium Azide.
Isotype	IgG1k
Storage	Store at -20°C for up to 1 year from the date of receipt, and avoid repeat freeze-thaw cycles.
Instruction	

TARGET INFORMATION

Gene ID	9476
Gene Symbol	NAPSA
Uniprot ID	NAPSA_HUMAN
Immunogen	Synthesized peptide derived from the human Napsin A at the amino acid range 100-200
Immunogen Region	100-200 aa
Specificity	This antibody detects endogenous levels of human Napsin A. Heat-induced epitope retrieval (HIER) TRIS-EDTA of pH9.0 was highly recommended as antigen repair method in paraffin section
Immunogen Sequence	



Human lung tissue was stained with Anti-Napsin A (ABT-ASP4) Antibody

Human lung adenocarcinoma tissue was stained with Anti-Napsin A (ABT-ASP4) Antibody

Human lung adenocarcinoma tissue was stained with Anti-Napsin A (ABT-ASP4) Antibody

This product is suitable for in-vitro studies under the RESEARCH USE ONLY [RUO] licence. This product must not be used as for diagnostic or other medical purposes.
St John's Laboratory Ltd, Knowledge Dock Business Centre, University Way, London, E16 2RD | Tel: 0208 223 3081