

**Anti-Actin, sarcomeric muscle antibody (2-50 aa) [ABT-SCA] (STJ197005)**  
STJ197005

**GENERAL INFORMATION**

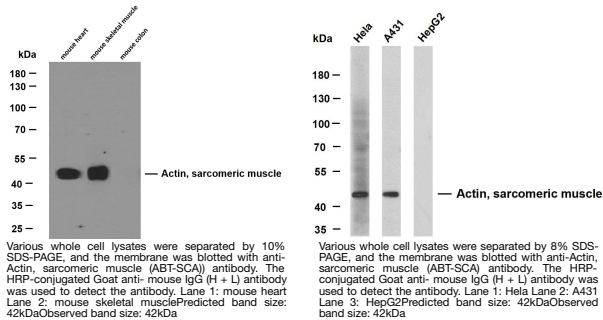
<b>Product Type</b>	Primary antibodies
<b>Short Description</b>	Mouse monoclonal antibody anti-Actin, sarcomeric muscle (2-50 aa) is suitable for use in Western Blot, Immunohistochemistry and Immunofluorescence research applications.
<b>Applications</b>	WB/IHC/IF
<b>Host/Source</b>	Mouse
<b>Reactivity</b>	Human

**PRODUCT PROPERTIES**

<b>Clonality</b>	Monoclonal
<b>Clone ID</b>	ABT-SCA
<b>Concentration</b>	
<b>Conjugation</b>	Unconjugated
<b>Purification</b>	The antibody was affinity-purified from mouse ascites by affinity-chromatography using specific immunogen.
<b>Dilution</b>	IHC-P 1:100-500
<b>Range</b>	WB 1:100-2000 IF 1:50-200
<b>Formulation</b>	Liquid in PBS containing 50% Glycerol, 0.5% BSA and 0.02% Sodium Azide.
<b>Isotype</b>	IgG1k
<b>Storage</b>	Store at -20°C for up to 1 year from the date of receipt, and avoid repeat freeze-thaw cycles.
<b>Instruction</b>	

**TARGET INFORMATION**

<b>Gene ID</b>	<a href="#">70</a> <a href="#">58</a>
<b>Gene Symbol</b>	<a href="#">ACTC1</a> <a href="#">ACTA1</a>
<b>Uniprot ID</b>	<a href="#">ACTC_HUMAN</a> <a href="#">ACTS_HUMAN</a>
<b>Immunogen</b>	Synthesized peptide derived from the human Actin, sarcomeric muscle at the amino acid range 2-50
<b>Immunogen Region</b>	2-50 aa
<b>Specificity</b>	This antibody detects endogenous levels of human Actin, sarcomeric muscle. Heat-induced epitope retrieval (HIER) Citrate buffer of pH6.0 was highly recommended as antigen repair method in paraffin sec
<b>Immunogen Sequence</b>	



This product is suitable for in-vitro studies under the RESEARCH USE ONLY [RUO] licence. This product must not be used as for diagnostic or other medical purposes.  
St John's Laboratory Ltd, Knowledge Dock Business Centre, University Way, London, E16 2RD | Tel: 0208 223 3081