

Anti-SMARCB1 antibody (300-385 aa) [ABT-INI1] (STJ196996)

STJ196996

GENERAL INFORMATION

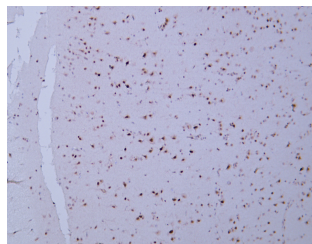
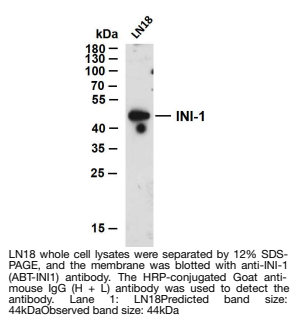
Product Type	Primary antibodies
Short Description	Mouse monoclonal antibody anti-SWI/SNF-related matrix-associated actin-dependent regulator of chromatin subfamily B member 1 (300-385 aa) is suitable for use in Immunohistochemistry and Western Blot research applications.
Applications	IHC/WB
Host/Source	Mouse
Reactivity	Human/Mouse/Rat

PRODUCT PROPERTIES

Clonality	Monoclonal
Clone ID	ABT-INI1
Concentration	
Conjugation	Unconjugated
Purification	The antibody was affinity-purified from mouse ascites by affinity-chromatography using specific immunogen.
Dilution	IHC-P 1:100-500
Range	WB 1:500-2000
Formulation	Liquid in PBS containing 50% Glycerol, 0.5% BSA and 0.02% Sodium Azide.
Isotype	IgG2bk
Storage	Store at -20°C for up to 1 year from the date of receipt, and avoid repeat freeze-thaw cycles.
Instruction	

TARGET INFORMATION

Gene ID	6598
Gene Symbol	SMARCB1
Uniprot ID	SNF5_HUMAN
Immunogen	Synthesized peptide derived from the human INI-1 at the amino acid range 300-385
Immunogen Region	300-385 aa
Specificity	This antibody detects endogenous levels of human INI-1. Heat-induced epitope retrieval (HIER) Citrate buffer of pH6.0 was highly recommended as antigen repair method in paraffin section
Immunogen Sequence	



Human cerebrum tissue was stained with Anti-INI-1 (ABT-INI1) Antibody

This product is suitable for in-vitro studies under the RESEARCH USE ONLY [RUO] licence. This product must not be used as for diagnostic or other medical purposes.
St John's Laboratory Ltd, Knowledge Dock Business Centre, University Way, London, E16 2RD | Tel: 0208 223 3081