

Anti-PIP antibody (50-146 aa) [ABT-GCDFP15] (STJ196995)

STJ196995

GENERAL INFORMATION

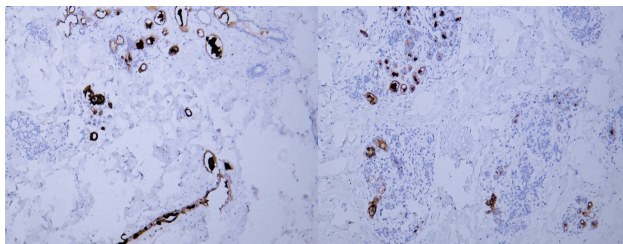
Product Type	Primary antibodies
Short Description	Mouse monoclonal antibody anti-Prolactin-inducible protein (50-146 aa) is suitable for use in Immunohistochemistry and Immunofluorescence research applications.
Applications	IHC/IF
Host/Source	Mouse
Reactivity	Human

PRODUCT PROPERTIES

Clonality	Monoclonal
Clone ID	ABT-GCDFP15
Concentration	
Conjugation	Unconjugated
Purification	The antibody was affinity-purified from mouse ascites by affinity-chromatography using specific immunogen.
Dilution	WB 500-2000
Range	IHC-P 1:100-500 IF 1:50-200
Formulation	Liquid in PBS containing 50% Glycerol, 0.5% BSA and 0.02% Sodium Azide.
Isotype	IgG1k
Storage	Store at -20°C for up to 1 year from the date of receipt, and avoid repeat freeze-thaw cycles.
Instruction	

TARGET INFORMATION

Gene ID	5304
Gene Symbol	PIP
Uniprot ID	PIP_HUMAN
Immunogen	Synthesized peptide derived from the human Gross cystic disease fluid protein-15 (GCDFP-15) at the amino acid range 50-146
Immunogen Region	50-146 aa
Specificity	This antibody detects endogenous levels of human Gross cystic disease fluid protein-15 (GCDFP-15). Heat-induced epitope retrieval (HIER) TRIS-EDTA of pH8.0 was highly recommended as antigen repair met
Immunogen Sequence	



Human breast tissue was stained with Anti-GCDFP-15 (ABT-GCDFP15) Antibody

Human breast tissue was stained with Anti-GCDFP-15 (ABT-GCDFP15) Antibody

This product is suitable for in-vitro studies under the RESEARCH USE ONLY [RUO] licence. This product must not be used as for diagnostic or other medical purposes.
St John's Laboratory Ltd, Knowledge Dock Business Centre, University Way, London, E16 2RD | Tel: 0208 223 3081