

Anti-TIMP1 antibody (50-150 aa) [PT2236] (STJ196989)

STJ196989

GENERAL INFORMATION

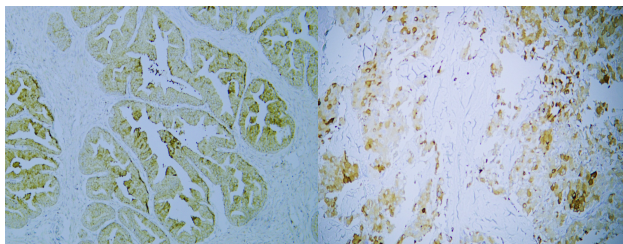
Product Type	Primary antibodies
Short Description	Mouse monoclonal antibody anti-Metalloproteinase inhibitor 1 (50-150 aa) is suitable for use in Immunohistochemistry, Immunofluorescence and Western Blot research applications.
Applications	IHC/IF/WB
Host/Source	Mouse
Reactivity	Human

PRODUCT PROPERTIES

Clonality	Monoclonal
Clone ID	PT2236
Concentration	
Conjugation	Unconjugated
Purification	The antibody was affinity-purified from mouse ascites by affinity-chromatography using specific immunogen.
Dilution Range	WB 500-2000 IHC-P 1:100-500 IF 1:50-200
Formulation	Liquid in PBS containing 50% Glycerol, 0.5% BSA and 0.02% Sodium Azide.
Isotype	IgG1k
Storage Instruction	Store at -20°C for up to 1 year from the date of receipt, and avoid repeat freeze-thaw cycles.

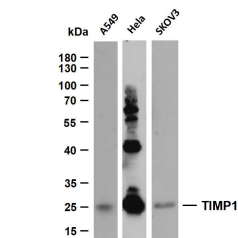
TARGET INFORMATION

Gene ID	7076
Gene Symbol	TIMP1
Uniprot ID	TIMP1_HUMAN
Immunogen	Synthesized peptide derived from the human Tissue Inhibitor of Metalloproteinases 1 (TIMP1) at the amino acid range 50-150
Immunogen Region	50-150 aa
Specificity	This antibody detects endogenous levels of human Metalloproteinase inhibitor 1 (Erythroid-potentiating activity) (EPA) (Fibroblast collagenase inhibitor) (Collagenase inhibitor) (Tissue inhibitor of m
Immunogen Sequence	



Human prostate tissue was stained with Anti-TIMP1 (PT2236) Antibody

Human thyroid carcinoma tissue was stained with Anti-TIMP1 (PT2236) Antibody



Various whole cell lysates were separated by 10% SDS-PAGE, and the membrane was blotted with anti-TIMP1 (PT2236) antibody. The HRP-conjugated Goat anti-mouse IgG (H + L) antibody was used to detect the antibody. Lane 1: A549 Lane 2: Hela Lane 3: SKOV3 Predicted band size: 23kDa Observed band size: 23kDa

This product is suitable for in-vitro studies under the RESEARCH USE ONLY [RUO] licence. This product must not be used as for diagnostic or other medical purposes.
St John's Laboratory Ltd, Knowledge Dock Business Centre, University Way, London, E16 2RD | Tel: 0208 223 3081