

Anti-INS antibody (25-110 aa) [PT2015] (STJ196973)

STJ196973

GENERAL INFORMATION

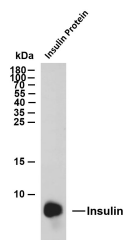
Product Type	Primary antibodies
Short Description	Mouse monoclonal antibody anti-Insulin (25-110 aa) is suitable for use in Immunohistochemistry, Western Blot and Immunofluorescence research applications.
Applications	IHC/WB/IF
Host/Source	Mouse
Reactivity	Human/Mouse/Rat

PRODUCT PROPERTIES

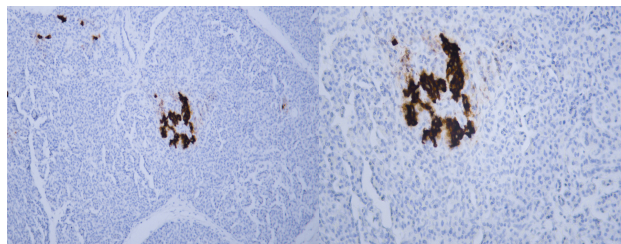
Clonality	Monoclonal
Clone ID	PT2015
Concentration	
Conjugation	Unconjugated
Purification	The antibody was affinity-purified from mouse ascites by affinity-chromatography using specific immunogen.
Dilution Range	IHC-P 1:100-500 WB 1:200-1000 IF 1:50-200
Formulation	Liquid in PBS containing 50% Glycerol, 0.5% BSA and 0.02% Sodium Azide.
Isotype	IgG2bk
Storage Instruction	Store at -20°C for up to 1 year from the date of receipt, and avoid repeat freeze-thaw cycles.

TARGET INFORMATION

Gene ID	3630
Gene Symbol	INS
Uniprot ID	INS_HUMAN
Immunogen	Synthesized peptide derived from the human Insulin at the amino acid range 25-110
Immunogen Region	25-110 aa
Specificity	This antibody detects endogenous levels of human Insulin. Heat-induced epitope retrieval (HIER) Citrate buffer of pH6.0 was highly recommended as antigen repair method in paraffin section
Immunogen Sequence	



Whole cell lysates were separated by 15% SDS-PAGE, and the membrane was blotted with anti-Insulin (ABT189) antibody. The HRP-conjugated Goat anti-mouse IgG (H + L) antibody was used to detect the antibody. Lane 1: Insulin recombinant protein Predicted band size: 12kDa Observed band size: 9kDa



Human pancreas tissue was stained with Anti-Insulin (ABT189) Antibody

Human pancreas tissue was stained with Anti-Insulin (ABT189) Antibody

This product is suitable for in-vitro studies under the RESEARCH USE ONLY [RUO] licence. This product must not be used as for diagnostic or other medical purposes.
St John's Laboratory Ltd, Knowledge Dock Business Centre, University Way, London, E16 2RD | Tel: 0208 223 3081