

Anti-CLDN4 antibody (150-209 aa) [PT1925] (STJ196954)

STJ196954

GENERAL INFORMATION

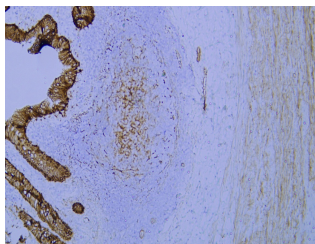
Product Type	Primary antibodies
Short Description	Mouse monoclonal antibody anti-Claudin-4 (150-209 aa) is suitable for use in Immunohistochemistry, Immunofluorescence and Western Blot research applications.
Applications	IHC/IF/WB
Host/Source	Mouse
Reactivity	Human/Mouse/Rat

PRODUCT PROPERTIES

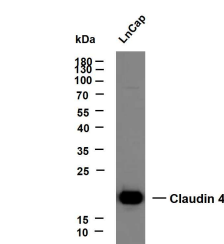
Clonality	Monoclonal
Clone ID	PT1925
Concentration	
Conjugation	Unconjugated
Purification	The antibody was affinity-purified from mouse ascites by affinity-chromatography using specific immunogen.
Dilution	IHC-P 1:100-500
Range	WB 1:500-2000 IF 1:50-200
Formulation	Liquid in PBS containing 50% Glycerol, 0.5% BSA and 0.02% Sodium Azide.
Isotype	IgG2bk
Storage	Store at -20°C for up to 1 year from the date of receipt, and avoid repeat freeze-thaw cycles.
Instruction	

TARGET INFORMATION

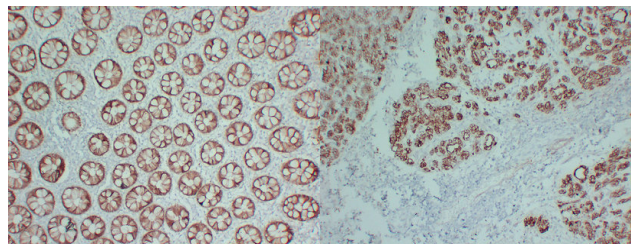
Gene ID	1364
Gene Symbol	CLDN4
Uniprot ID	CLD4_HUMAN
Immunogen	Synthesized peptide derived from the human Claudin 4 at the amino acid range 150-209
Immunogen Region	150-209 aa
Specificity	This antibody detects endogenous levels of human Claudin 4. Heat-induced epitope retrieval (HIER) TRIS-EDTA of pH8.0 was highly recommended as antigen repair method in paraffin section. The antibody w
Immunogen Sequence	



Human appendix tissue was stained with Anti-Claudin 4 (PT1925) Antibody



Whole cell lysates were separated by 12% SDS-PAGE, and the membrane was blotted with anti-Claudin 4 (PT1925) antibody. The HRP-conjugated Goat anti-mouse IgG (H + L) antibody was used to detect the antibody. Lane 1: LnCap Predicted band size: 22kDa Observed band size: 18kDa



Immunohistochemical analysis of paraffin-embedded Colon. 1, Antibody was diluted at 1:200 (4°C overnight). 2, TRIS-EDTA of pH8.0 was used for antigen retrieval. 3, Secondary antibody was diluted at 1:200 (room temperature, 30min).

Immunohistochemical analysis of paraffin-embedded Pancreatic carcinoma. 1, Antibody was diluted at 1:200 (4°C overnight). 2, TRIS-EDTA of pH8.0 was used for antigen retrieval. 3, Secondary antibody was diluted at 1:200 (room temperature, 30min).

This product is suitable for in-vitro studies under the RESEARCH USE ONLY [RUO] licence. This product must not be used as for diagnostic or other medical purposes.
St John's Laboratory Ltd, Knowledge Dock Business Centre, University Way, London, E16 2RD | Tel: 0208 223 3081