

## Anti-MCM2 antibody (300-400 aa) [ABT-MCM2] (STJ196928)

STJ196928

### GENERAL INFORMATION

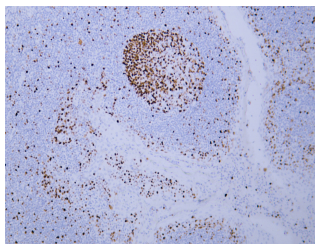
<b>Product Type</b>	Primary antibodies
<b>Short Description</b>	Mouse monoclonal antibody anti-DNA replication licensing factor MCM2 (300-400 aa) is suitable for use in Immunohistochemistry and Western Blot research applications.
<b>Applications</b>	IHC/WB
<b>Host/Source</b>	Mouse
<b>Reactivity</b>	Human/Mouse/Rat

### PRODUCT PROPERTIES

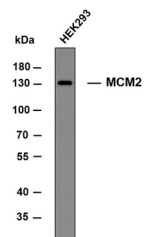
<b>Clonality</b>	Monoclonal
<b>Clone ID</b>	ABT-MCM2
<b>Concentration</b>	
<b>Conjugation</b>	Unconjugated
<b>Purification</b>	The antibody was affinity-purified from mouse ascites by affinity-chromatography using specific immunogen.
<b>Dilution Range</b>	IHC-P 1:100-500 WB 1:500-2000
<b>Formulation</b>	Liquid in PBS containing 50% Glycerol, 0.5% BSA and 0.02% Sodium Azide.
<b>Isotype</b>	IgG1k
<b>Storage</b>	Store at -20°C for up to 1 year from the date of receipt, and avoid repeat freeze-thaw cycles.
<b>Instruction</b>	

### TARGET INFORMATION

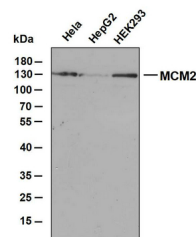
<b>Gene ID</b>	4171
<b>Gene Symbol</b>	MCM2
<b>Uniprot ID</b>	MCM2_HUMAN
<b>Immunogen</b>	Synthesized peptide derived from the human MCM2 at the amino acid range 300-400
<b>Immunogen Region</b>	300-400 aa
<b>Specificity</b>	This antibody detects endogenous levels of human MCM2. Heat-induced epitope retrieval (HIER) TRIS-EDTA of pH8.0 was highly recommended as antigen repair method in paraffin section
<b>Immunogen Sequence</b>	



Human tonsil tissue was stained with Anti-MCM2 (ABT-MCM2) Antibody



Whole cell lysates of HEK293 were separated by 8% SDS-PAGE, and the membrane was blotted with anti-MCM2 antibody. The HRP-conjugated anti-mouse IgG antibody was used to detect the antibody. Predicted band size: 102 (130) kDa



Various whole cell lysates were separated by 10% SDS-PAGE, and the membrane was blotted with anti-MCM2 antibody. The HRP-conjugated anti-mouse IgG antibody was used to detect the antibody. Predicted band size: 102 kDa Observed band size: 130 kDa

This product is suitable for in-vitro studies under the RESEARCH USE ONLY [RUO] licence. This product must not be used as for diagnostic or other medical purposes.  
St John's Laboratory Ltd, Knowledge Dock Business Centre, University Way, London, E16 2RD | Tel: 0208 223 3081