

Anti-KRT5 antibody (500-590 aa) [ABT-CK5] (STJ196922)

STJ196922

GENERAL INFORMATION

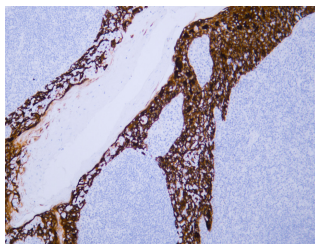
Product Type	Primary antibodies
Short Description	Mouse monoclonal antibody anti-Keratin, type II cytoskeletal 5 (500-590 aa) is suitable for use in Immunohistochemistry and Western Blot research applications.
Applications	IHC/WB
Host/Source	Mouse
Reactivity	Human/Mouse/Rat

PRODUCT PROPERTIES

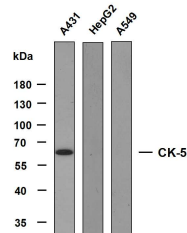
Clonality	Monoclonal
Clone ID	ABT-CK5
Concentration	
Conjugation	Unconjugated
Purification	The antibody was affinity-purified from mouse ascites by affinity-chromatography using specific immunogen.
Dilution	IHC-P 1:100-500
Range	WB 1:500-2000
Formulation	Liquid in PBS containing 50% Glycerol, 0.5% BSA and 0.02% Sodium Azide.
Isotype	IgG2ak
Storage	Store at -20°C for up to 1 year from the date of receipt, and avoid repeat freeze-thaw cycles.
Instruction	

TARGET INFORMATION

Gene ID	3852
Gene Symbol	KRT5
Uniprot ID	K2C5_HUMAN
Immunogen	Synthesized peptide derived from the human Cytokeratin 5 at the amino acid range 500-590
Immunogen Region	500-590 aa
Specificity	This antibody detects endogenous levels of human Cytokeratin 5. Heat-induced epitope retrieval (HIER) TRIS-EDTA of pH8.0 was highly recommended as antigen repair method in paraffin section. The antibo
Immunogen Sequence	



Human tonsil tissue was stained with Anti-Cytokeratin 5 (ABT-CK5) Antibody



Various whole cell lysates were separated by 8% SDS-PAGE, and the membrane was blotted with anti-CK5 antibody. The HRP-conjugated anti-mouse IgG antibody was used to detect the antibody. Predicted band size: 62 kDa

This product is suitable for in-vitro studies under the RESEARCH USE ONLY [RUO] licence. This product must not be used as for diagnostic or other medical purposes.
St John's Laboratory Ltd, Knowledge Dock Business Centre, University Way, London, E16 2RD | Tel: 0208 223 3081