

## Anti-Actin, smooth muscle antibody (1-100 aa) [ABT-SMA] (STJ196911)

STJ196911

### GENERAL INFORMATION

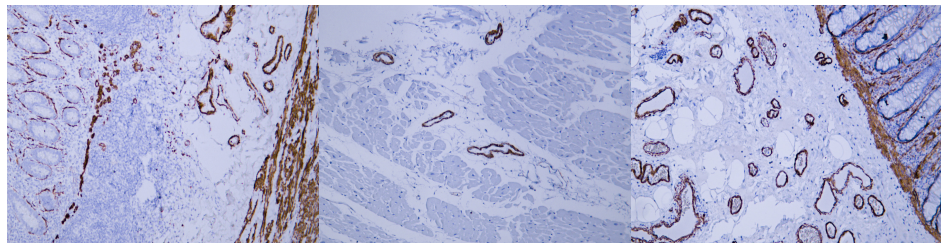
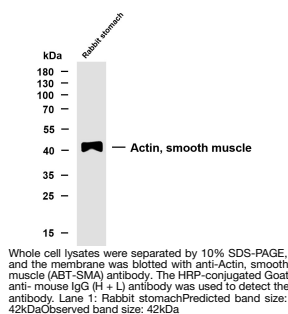
<b>Product Type</b>	Primary antibodies
<b>Short Description</b>	Mouse monoclonal antibody anti-Actin, smooth muscle (1-100 aa) is suitable for use in Immunohistochemistry, Western Blot and Immunofluorescence research applications.
<b>Applications</b>	IHC/WB/IF
<b>Host/Source</b>	Mouse
<b>Reactivity</b>	Human/Mouse/Rat

### PRODUCT PROPERTIES

<b>Clonality</b>	Monoclonal
<b>Clone ID</b>	ABT-SMA
<b>Concentration</b>	
<b>Conjugation</b>	Unconjugated
<b>Purification</b>	The antibody was affinity-purified from mouse ascites by affinity-chromatography using specific immunogen.
<b>Dilution</b>	IHC-P 1:300-500
<b>Range</b>	IF 1:50-200 WB 1:200-1000
<b>Formulation</b>	Liquid in PBS containing 50% Glycerol, 0.5% BSA and 0.02% Sodium Azide.
<b>Isotype</b>	IgG2ak
<b>Storage</b>	Store at -20°C for up to 1 year from the date of receipt, and avoid repeat freeze-thaw cycles.
<b>Instruction</b>	

### TARGET INFORMATION

<b>Gene ID</b>	<a href="#">59</a> <a href="#">72</a>
<b>Gene Symbol</b>	<a href="#">ACTA2</a> <a href="#">ACTG2</a>
<b>Uniprot ID</b>	<a href="#">ACTA_HUMAN</a> <a href="#">ACTH_HUMAN</a>
<b>Immunogen</b>	Synthesized peptide derived from the human Actin, smooth muscle (SMA) at the amino acid range 1-100
<b>Immunogen Region</b>	1-100 aa
<b>Specificity</b>	This antibody detects endogenous levels of human Actin, smooth muscle (SMA). Heat-induced epitope retrieval (HIER) TRIS-EDTA of pH8.0 was highly recommended as antigen repair method in paraffin section
<b>Immunogen Sequence</b>	



Human appendix tissue was stained with anti-SMA (ABT-SMA) antibody.

Human cardiac muscle tissue was stained with anti-SMA (ABT-SMA) antibody.

Human colon tissue was stained with anti-SMA (ABT-SMA) antibody.

This product is suitable for in-vitro studies under the RESEARCH USE ONLY [RUO] licence. This product must not be used as for diagnostic or other medical purposes.  
St John's Laboratory Ltd, Knowledge Dock Business Centre, University Way, London, E16 2RD | Tel: 0208 223 3081