

Anti-PTH antibody (50-115 aa) [PT0210] (STJ196888)

STJ196888

GENERAL INFORMATION

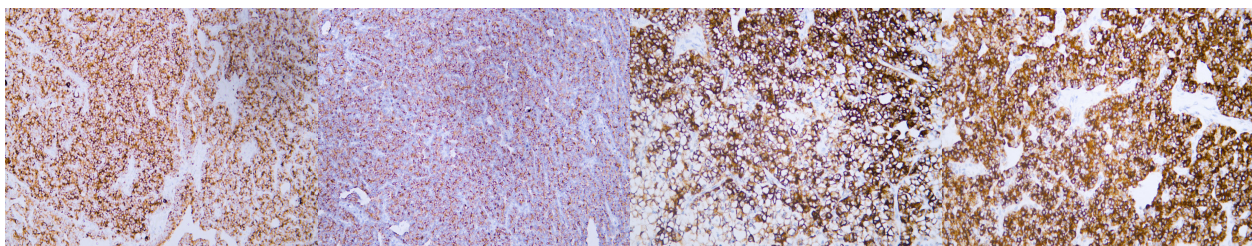
Product Type	Primary antibodies
Short Description	Mouse monoclonal antibody anti-Parathyroid hormone (50-115 aa) is suitable for use in Immunohistochemistry and Immunofluorescence research applications.
Applications	IHC/IF
Host/Source	Mouse
Reactivity	Human/Mouse/Rat

PRODUCT PROPERTIES

Clonality	Monoclonal
Clone ID	PT0210
Concentration	
Conjugation	Unconjugated
Purification	The antibody was affinity-purified from mouse ascites by affinity-chromatography using specific immunogen.
Dilution	IHC-P 1:100-500
Range	IF 1:50-200
Formulation	Liquid in PBS containing 50% Glycerol, 0.5% BSA and 0.02% Sodium Azide.
Isotype	IgG1k
Storage	Store at -20°C for up to 1 year from the date of receipt, and avoid repeat freeze-thaw cycles.
Instruction	

TARGET INFORMATION

Gene ID	5741
Gene Symbol	PTH
Uniprot ID	PTHY_HUMAN
Immunogen	Synthesized peptide derived from the human Parathyroid Hormone (PTH) at the amino acid range 50-115
Immunogen Region	50-115 aa
Specificity	This antibody detects endogenous levels of human Parathyroid Hormone (PTH). Heat-induced epitope retrieval (HIER) TRIS-EDTA of pH8.0 was highly recommended as antigen repair method in paraffin section
Immunogen Sequence	



Human parathyroidoma tissue was stained with Anti-Parathyroid Hormone (ABT215) Antibody

Human parathyroidoma tissue was stained with Anti-Parathyroid Hormone (ABT215) Antibody

Human parathyroidoma tissue was stained with Anti-Parathyroid Hormone (ABT215) Antibody

Human parathyroidoma tissue was stained with Anti-Parathyroid Hormone (ABT215) Antibody

This product is suitable for in-vitro studies under the RESEARCH USE ONLY [RUO] licence. This product must not be used as for diagnostic or other medical purposes.
St John's Laboratory Ltd, Knowledge Dock Business Centre, University Way, London, E16 2RD | Tel: 0208 223 3081