

Anti-FOLH1 antibody (100-200 aa) [ABT-PSMA] (STJ196863)

STJ196863

GENERAL INFORMATION

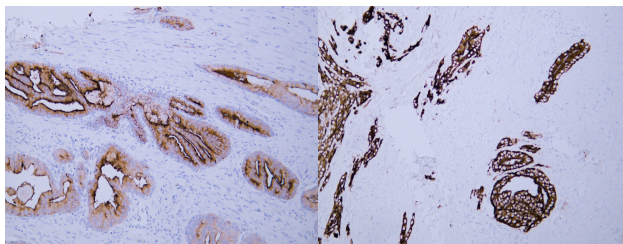
Product Type	Primary antibodies
Short Description	Mouse monoclonal antibody anti-Glutamate carboxypeptidase 2 (100-200 aa) is suitable for use in Immunohistochemistry and Western Blot research applications.
Applications	IHC/WB
Host/Source	Mouse
Reactivity	Human/Mouse/Rat

PRODUCT PROPERTIES

Clonality	Monoclonal
Clone ID	ABT-PSMA
Concentration	
Conjugation	Unconjugated
Purification	The antibody was affinity-purified from mouse ascites by affinity-chromatography using specific immunogen.
Dilution	IHC-P 1:100-500
Range	WB 1:500-2000
Formulation	Liquid in PBS containing 50% Glycerol, 0.5% BSA and 0.02% Sodium Azide.
Isotype	IgG1k
Storage	Store at -20°C for up to 1 year from the date of receipt, and avoid repeat freeze-thaw cycles.
Instruction	

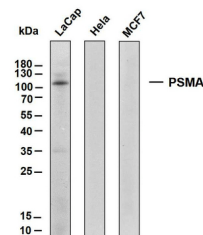
TARGET INFORMATION

Gene ID	2346
Gene Symbol	FOLH1
Uniprot ID	FOLH1_HUMAN
Immunogen	Synthesized peptide derived from the human Prostate-Specific Membrane Antigen (PSMA) at the amino acid range 100-200
Immunogen Region	100-200 aa
Specificity	This antibody detects endogenous levels of human Prostate-Specific Membrane Antigen (PSMA). Heat-induced epitope retrieval (HIER) Citrate buffer of pH6.0 was highly recommended as antigen repair metho
Immunogen Sequence	

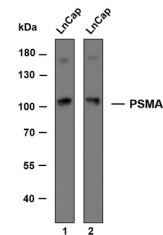


Human prostate tissue was stained with Anti-Prostate-Specific Membrane Antigen (ABT-PSMA) Antibody

Human prostatic adenocarcinoma tissue was stained with Anti-Prostate-Specific Membrane Antigen (ABT-PSMA) Antibody



Various whole cell lysates were separated by 12% SDS-PAGE, and the membrane was blotted with anti-PSMA antibody. The HRP-conjugated anti-mouse IgG antibody was used to detect the antibody. Predicted band size: 84 kDa Observed band size: 110 kDa



Whole cell lysates of LnCap were separated by 8% SDS-PAGE, and the membrane was blotted with anti-PSMA antibody. The HRP-conjugated anti-mouse IgG antibody was used to detect the antibody. Lane 1: Anti-PSMA antibody at 1 µg/ml Lane 2: Anti-PSMA antibody at 0.2 µg/ml Predicted band size: 84 kDa Observed band size: 100 kDa

This product is suitable for in-vitro studies under the RESEARCH USE ONLY [RUO] licence. This product must not be used as for diagnostic or other medical purposes.
St John's Laboratory Ltd, Knowledge Dock Business Centre, University Way, London, E16 2RD | Tel: 0208 223 3081