

Anti-KRT17 antibody (300-432 aa) [ABT-CK17] (STJ196821)

STJ196821

GENERAL INFORMATION

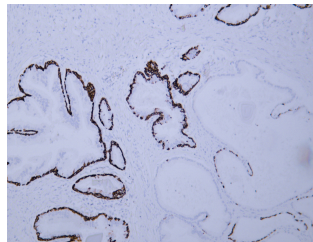
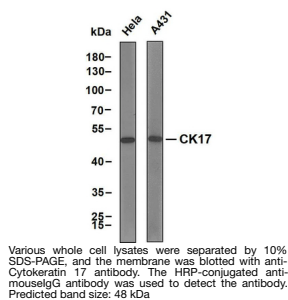
Product Type	Primary antibodies
Short Description	Mouse monoclonal antibody anti-Keratin, type I cytoskeletal 17 (300-432 aa) is suitable for use in Immunohistochemistry, Immunofluorescence and Western Blot research applications.
Applications	IHC/IF/WB
Host/Source	Mouse
Reactivity	Human/Mouse/Rat

PRODUCT PROPERTIES

Clonality	Monoclonal
Clone ID	ABT-CK17
Concentration	
Conjugation	Unconjugated
Purification	The antibody was affinity-purified from mouse ascites by affinity-chromatography using specific immunogen.
Dilution	IHC-P 1:100-500
Range	WB 1:200-1000 IF 1:100-500
Formulation	Liquid in PBS containing 50% Glycerol, 0.5% BSA and 0.02% Sodium Azide.
Isotype	IgG1k
Storage Instruction	Store at -20°C for up to 1 year from the date of receipt, and avoid repeat freeze-thaw cycles.

TARGET INFORMATION

Gene ID	3872
Gene Symbol	KRT17
Uniprot ID	K1C17_HUMAN
Immunogen	Synthesized peptide derived from the human Cytokeratin 17 at the amino acid range 300-432
Immunogen Region	300-432 aa
Specificity	This antibody detects endogenous levels of human Cytokeratin 17. Heat-induced epitope retrieval (HIER) TRIS-EDTA of pH8.0 was highly recommended as antigen repair method in paraffin section. The antib
Immunogen Sequence	



Human prostate tissue was stained with Anti-Cytokeratin 17 (ABT-CK17) Antibody