

Anti-KRT13 antibody (400-458 aa) [ABT-CK13] (STJ196819)

STJ196819

GENERAL INFORMATION

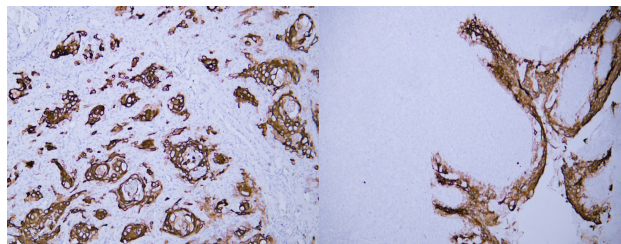
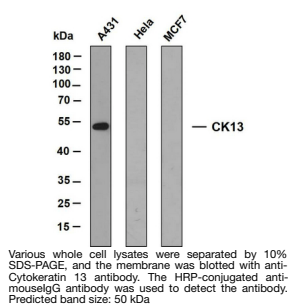
Product Type	Primary antibodies
Short Description	Mouse monoclonal antibody anti-Keratin, type I cytoskeletal 13 (400-458 aa) is suitable for use in Immunohistochemistry and Western Blot research applications.
Applications	IHC/WB
Host/Source	Mouse
Reactivity	Human

PRODUCT PROPERTIES

Clonality	Monoclonal
Clone ID	ABT-CK13
Concentration	
Conjugation	Unconjugated
Purification	The antibody was affinity-purified from mouse ascites by affinity-chromatography using specific immunogen.
Dilution	IHC-P 1:100-500
Range	WB 1:500-2000
Formulation	Liquid in PBS containing 50% Glycerol, 0.5% BSA and 0.02% Sodium Azide.
Isotype	IgG1k
Storage	Store at -20°C for up to 1 year from the date of receipt, and avoid repeat freeze-thaw cycles.
Instruction	

TARGET INFORMATION

Gene ID	3860
Gene Symbol	KRT13
Uniprot ID	K1C13_HUMAN
Immunogen	Synthesized peptide derived from the human Cytokeratin 13 at the amino acid range 400-458
Immunogen Region	400-458 aa
Specificity	This antibody detects endogenous levels of human Cytokeratin 13. Heat-induced epitope retrieval (HIER) Citrate buffer of pH6.0 was highly recommended as antigen repair method in paraffin section
Immunogen Sequence	



Human cervical squamous cell carcinoma tissue was stained with Anti-Cytokeratin 13 (ABT-CK13) Antibody

Human tonsil tissue was stained with Anti-Cytokeratin 13 (ABT-CK13) Antibody

This product is suitable for in-vitro studies under the RESEARCH USE ONLY [RUO] licence. This product must not be used as for diagnostic or other medical purposes.
St John's Laboratory Ltd, Knowledge Dock Business Centre, University Way, London, E16 2RD | Tel: 0208 223 3081