

Anti-CD1A antibody (200-327 aa) [PT0024] (STJ196805)

STJ196805

GENERAL INFORMATION

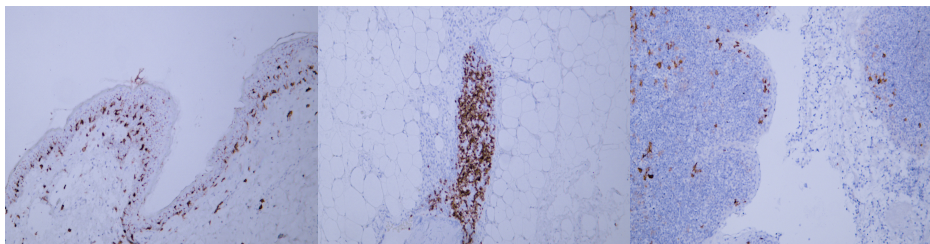
Product Type	Primary antibodies
Short Description	Mouse monoclonal antibody anti-T-cell surface glycoprotein CD1a (200-327 aa) is suitable for use in Immunohistochemistry and Immunofluorescence research applications.
Applications	IHC/IF
Host/Source	Mouse
Reactivity	Human

PRODUCT PROPERTIES

Clonality	Monoclonal
Clone ID	PT0024
Concentration	
Conjugation	Unconjugated
Purification	The antibody was affinity-purified from mouse ascites by affinity-chromatography using specific immunogen.
Dilution Range	IHC-P 1:100-500 IF 1:50-200
Formulation	Liquid in PBS containing 50% Glycerol, 0.5% BSA and 0.02% Sodium Azide.
Isotype	IgG2bk
Storage	Store at -20°C for up to 1 year from the date of receipt, and avoid repeat freeze-thaw cycles.
Instruction	

TARGET INFORMATION

Gene ID	909
Gene Symbol	CD1A
Uniprot ID	CD1A_HUMAN
Immunogen	Synthesized peptide derived from the human CD1a at the amino acid range 200-327
Immunogen Region	200-327 aa
Specificity	This antibody detects endogenous levels of human CD1a. Heat-induced epitope retrieval (HIER) Citrate buffer of pH6.0 was highly recommended as antigen repair method in paraffin section
Immunogen Sequence	



Human skin tissue was stained with anti-CD1a (ABT140) antibody.

Human thymus tissue was stained with anti-CD1a (ABT140) antibody.

Human tonsil tissue was stained with anti-CD1a (ABT140) antibody.

This product is suitable for in-vitro studies under the RESEARCH USE ONLY [RUO] licence. This product must not be used as for diagnostic or other medical purposes.
St John's Laboratory Ltd, Knowledge Dock Business Centre, University Way, London, E16 2RD | Tel: 0208 223 3081