

## Anti-CD163 antibody (1-100 aa) [ABT-CD163] (STJ196804)

STJ196804

### GENERAL INFORMATION

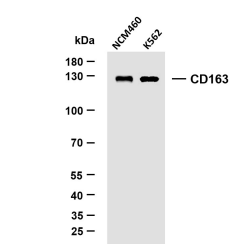
<b>Product Type</b>	Primary antibodies
<b>Short Description</b>	Mouse monoclonal antibody anti-Scavenger receptor cysteine-rich type 1 protein M130 (1-100 aa) is suitable for use in Immunohistochemistry and Immunofluorescence research applications.
<b>Applications</b>	IHC/IF
<b>Host/Source</b>	Mouse
<b>Reactivity</b>	Human/Mouse/Rat

### PRODUCT PROPERTIES

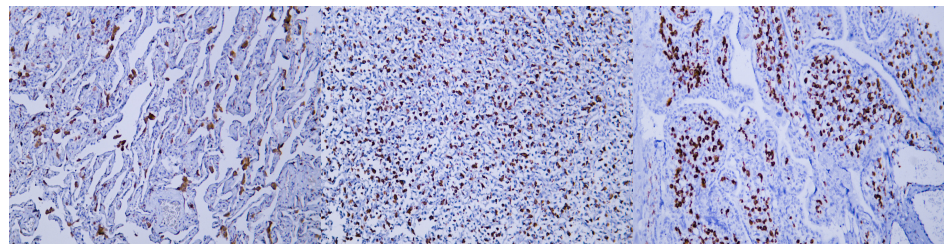
<b>Clonality</b>	Monoclonal
<b>Clone ID</b>	ABT-CD163
<b>Concentration</b>	
<b>Conjugation</b>	Unconjugated
<b>Purification</b>	The antibody was affinity-purified from mouse ascites by affinity-chromatography using specific immunogen.
<b>Dilution Range</b>	IHC-P 1:100-500 IF 1:50-200
<b>Formulation</b>	Liquid in PBS containing 50% Glycerol, 0.5% BSA and 0.02% Sodium Azide.
<b>Isotype</b>	IgG1k
<b>Storage</b>	Store at -20°C for up to 1 year from the date of receipt, and avoid repeat freeze-thaw cycles.
<b>Instruction</b>	

### TARGET INFORMATION

<b>Gene ID</b>	9332
<b>Gene Symbol</b>	CD163
<b>Uniprot ID</b>	C163A_HUMAN
<b>Immunogen</b>	Synthesized peptide derived from the human CD163 at the amino acid range 1-100
<b>Immunogen Region</b>	1-100 aa
<b>Specificity</b>	This antibody detects endogenous levels of human CD163. Heat-induced epitope retrieval (HIER) TRIS-EDTA of pH8.0 was highly recommended as antigen repair method in paraffin section
<b>Immunogen Sequence</b>	



Various whole cell lysates were separated by 10% SDS-PAGE, and the membrane was blotted with anti-CD163 (ABT-CD163) antibody. The HRP-conjugated Goat anti-mouse IgG (H + L) antibody was used to detect the antibody. Lane 1: NCM460 Lane 2: K562 Predicted band size: 125kDa Observed band size: 125kDa



Human lung tissue was stained with anti-CD163 (ABT-CD163) antibody.

Human malignant fibrous histiocytoma tissue was stained with anti-CD163 (ABT-CD163) antibody.

Human placenta tissue was stained with anti-CD163 (ABT-CD163) antibody.

This product is suitable for in-vitro studies under the RESEARCH USE ONLY [RUO] licence. This product must not be used as for diagnostic or other medical purposes.  
St John's Laboratory Ltd, Knowledge Dock Business Centre, University Way, London, E16 2RD | Tel: 0208 223 3081