

Anti-MLH1 antibody (400-500 aa) [ABT-MLH1] (STJ196792)

STJ196792

GENERAL INFORMATION

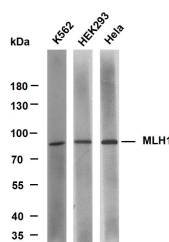
| | |
|--------------------------|--|
| Product Type | Primary antibodies |
| Short Description | Mouse monoclonal antibody anti-DNA mismatch repair protein Mlh1 (400-500 aa) is suitable for use in Western Blot, Immunohistochemistry and Immunofluorescence research applications. |
| Applications | WB/IHC/IF |
| Host/Source | Mouse |
| Reactivity | Human |

PRODUCT PROPERTIES

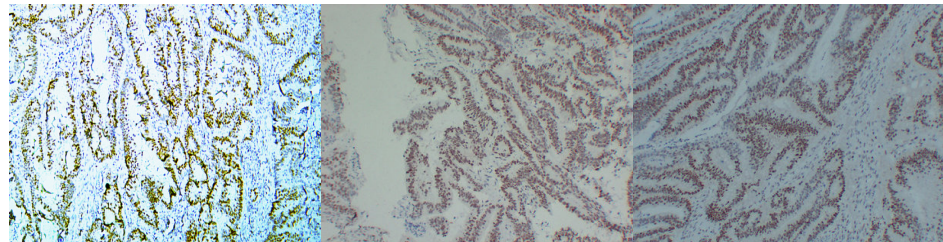
| | |
|----------------------------|--|
| Clonality | Monoclonal |
| Clone ID | ABT-MLH1 |
| Concentration | |
| Conjugation | Unconjugated |
| Purification | The antibody was affinity-purified from mouse ascites by affinity-chromatography using specific immunogen. |
| Dilution | IHC-P 1:100-500 |
| Range | WB 1:100-2000 IF 1:50-200 |
| Formulation | Liquid in PBS containing 50% Glycerol, 0.5% BSA and 0.02% Sodium Azide. |
| Isotype | IgG1k |
| Storage Instruction | Store at -20°C for up to 1 year from the date of receipt, and avoid repeat freeze-thaw cycles. |

TARGET INFORMATION

| | |
|---------------------------|---|
| Gene ID | 4292 |
| Gene Symbol | MLH1 |
| Uniprot ID | MLH1_HUMAN |
| Immunogen | Synthesized peptide derived from the human MutL Protein Homolog 1 (MLH1) at the amino acid range 400-500 |
| Immunogen Region | 400-500 aa |
| Specificity | This antibody detects endogenous levels of human MutL Protein Homolog 1 (MLH1). Heat-induced epitope retrieval (HIER) Citrate buffer of pH6.0 was highly recommended as antigen repair method in paraffin |
| Immunogen Sequence | |



Various whole cell lysates were separated by 8% SDS-PAGE, and the membrane was blotted with anti-MLH1 (ABT-MLH1) antibody. The HRP-conjugated Goat anti-mouse IgG (H + L) antibody was used to detect the antibody. Lane 1: K562 Lane 2: HEK293 Lane 3: HeLa Predicted band size: 84kDa Observed band size: 84kDa



Human rectal carcinoma tissue was stained with Anti-MLH1 (ABT-MLH1) Antibody

Immunohistochemical analysis of paraffin-embedded Colon carcinoma. 1. Antibody was diluted at 1:200 (4A°C overnight). 2. Citric acid, pH6.0 was used for antigen retrieval. 3. Secondary antibody was diluted at 1:200 (room temperature, 30min).

Immunohistochemical analysis of paraffin-embedded Colon carcinoma. 1. Antibody was diluted at 1:200 (4A°C overnight). 2. Citric acid, pH6.0 was used for antigen retrieval. 3. Secondary antibody was diluted at 1:200 (room temperature, 30min).

This product is suitable for in-vitro studies under the RESEARCH USE ONLY [RUO] licence. This product must not be used as for diagnostic or other medical purposes.
St John's Laboratory Ltd, Knowledge Dock Business Centre, University Way, London, E16 2RD | Tel: 0208 223 3081