

## Anti-INS antibody (25-110 aa) [ABT-INS] (STJ196791)

STJ196791

### GENERAL INFORMATION

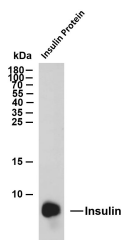
<b>Product Type</b>	Primary antibodies
<b>Short Description</b>	Mouse monoclonal antibody anti-Insulin (25-110 aa) is suitable for use in Immunohistochemistry, Western Blot and Immunofluorescence research applications.
<b>Applications</b>	IHC/WB/IF
<b>Host/Source</b>	Mouse
<b>Reactivity</b>	Human/Mouse/Rat

### PRODUCT PROPERTIES

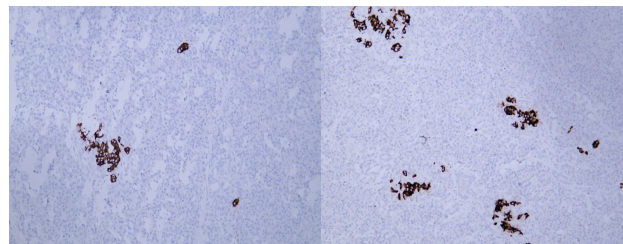
<b>Clonality</b>	Monoclonal
<b>Clone ID</b>	ABT-INS
<b>Concentration</b>	
<b>Conjugation</b>	Unconjugated
<b>Purification</b>	The antibody was affinity-purified from mouse ascites by affinity-chromatography using specific immunogen.
<b>Dilution Range</b>	IHC-P 1:100-500
	WB 1:200-1000
	IF 1:50-200
<b>Formulation</b>	Liquid in PBS containing 50% Glycerol, 0.5% BSA and 0.02% Sodium Azide.
<b>Isotype</b>	IgG2bk
<b>Storage Instruction</b>	Store at -20°C for up to 1 year from the date of receipt, and avoid repeat freeze-thaw cycles.

### TARGET INFORMATION

<b>Gene ID</b>	3630
<b>Gene Symbol</b>	INS
<b>Uniprot ID</b>	INS_HUMAN
<b>Immunogen</b>	Synthesized peptide derived from the human Insulin at the amino acid range 25-110
<b>Immunogen Region</b>	25-110 aa
<b>Specificity</b>	This antibody detects endogenous levels of human Insulin. Heat-induced epitope retrieval (HIER) Citrate buffer of pH6.0 was highly recommended as antigen repair method in paraffin section
<b>Immunogen Sequence</b>	



Whole cell lysates were separated by 15% SDS-PAGE, and the membrane was blotted with anti-Insulin (ABT-INS) antibody. The HRP-conjugated Goat anti-mouse IgG (H + L) antibody was used to detect the antibody. Lane 1: Insulin recombinant protein. Predicted band size: 12kDa. Observed band size: 9kDa.



Human pancreas tissue was stained with Anti-Insulin (ABT-INS) Antibody

Human pancreas tissue was stained with Anti-Insulin (ABT-INS) Antibody

This product is suitable for in-vitro studies under the RESEARCH USE ONLY [RUO] licence. This product must not be used as for diagnostic or other medical purposes.  
St John's Laboratory Ltd, Knowledge Dock Business Centre, University Way, London, E16 2RD | Tel: 0208 223 3081