

## Anti-TGFR1 antibody (34-100 aa) [ABT-TGFR1] (STJ196780)

STJ196780

### GENERAL INFORMATION

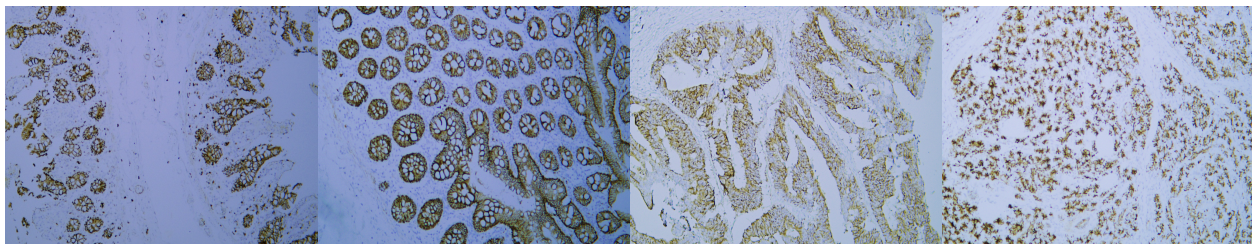
<b>Product Type</b>	Primary antibodies
<b>Short Description</b>	Mouse monoclonal antibody anti-TGF-beta receptor type-1 (34-100 aa) is suitable for use in Immunohistochemistry and Immunofluorescence research applications.
<b>Applications</b>	IHC/IF
<b>Host/Source</b>	Mouse
<b>Reactivity</b>	Human

### PRODUCT PROPERTIES

<b>Clonality</b>	Monoclonal
<b>Clone ID</b>	ABT-TGFR1
<b>Concentration</b>	
<b>Conjugation</b>	Unconjugated
<b>Purification</b>	The antibody was affinity-purified from mouse ascites by affinity-chromatography using specific immunogen.
<b>Dilution</b>	IHC-P 1:100-500
<b>Range</b>	IF 1:50-200
<b>Formulation</b>	Liquid in PBS containing 50% Glycerol, 0.5% BSA and 0.02% Sodium Azide.
<b>Isotype</b>	IgG2ak
<b>Storage</b>	Store at -20°C for up to 1 year from the date of receipt, and avoid repeat freeze-thaw cycles.
<b>Instruction</b>	

### TARGET INFORMATION

<b>Gene ID</b>	7046
<b>Gene Symbol</b>	TGFR1
<b>Uniprot ID</b>	TGFR1_HUMAN
<b>Immunogen</b>	Synthesized peptide derived from the human TGF Beta Receptor I at the amino acid range 34-100
<b>Immunogen Region</b>	34-100 aa
<b>Specificity</b>	This antibody detects endogenous levels of human TGF Beta Receptor I. Heat-induced epitope retrieval (HIER) Citrate buffer of pH6.0 was highly recommended as antigen repair method in paraffin section
<b>Immunogen Sequence</b>	



Human colon tissue was stained with Anti-TGF β Receptor I (ABT-TGFR1) Antibody

Human colon carcinoma tissue was stained with Anti-TGF β Receptor I (ABT-TGFR1) Antibody

Human colon carcinoma tissue was stained with Anti-TGF β Receptor I (ABT-TGFR1) Antibody

Human pancreas tissue was stained with Anti-TGF β Receptor I (ABT-TGFR1) Antibody

This product is suitable for in-vitro studies under the RESEARCH USE ONLY [RUO] licence. This product must not be used as for diagnostic or other medical purposes.  
St John's Laboratory Ltd, Knowledge Dock Business Centre, University Way, London, E16 2RD | Tel: 0208 223 3081