

Anti-KLK3 antibody (100-200 aa) [ABT-PSA] (STJ196776)

STJ196776

GENERAL INFORMATION

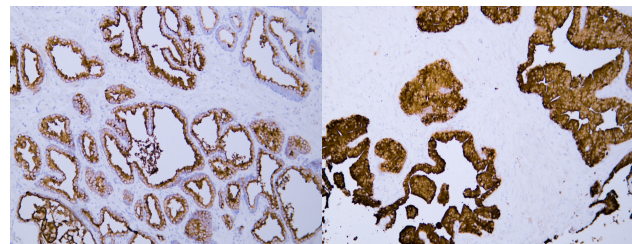
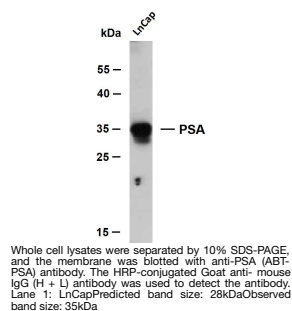
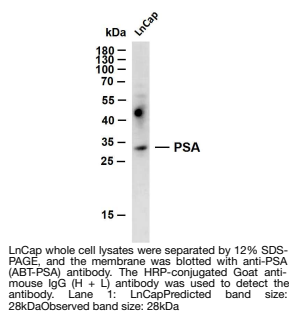
Product Type	Primary antibodies
Short Description	Mouse monoclonal antibody anti-Prostate-specific antigen (100-200 aa) is suitable for use in Immunohistochemistry, Western Blot and Immunofluorescence research applications.
Applications	IHC/WB/IF
Host/Source	Mouse
Reactivity	Human/Mouse/Rat

PRODUCT PROPERTIES

Clonality	Monoclonal
Clone ID	ABT-PSA
Concentration	
Conjugation	Unconjugated
Purification	The antibody was affinity-purified from mouse ascites by affinity-chromatography using specific immunogen.
Dilution	IHC-P 1:100-500
Range	WB 1:200-1000 IF 1:50-200
Formulation	Liquid in PBS containing 50% Glycerol, 0.5% BSA and 0.02% Sodium Azide.
Isotype	IgG1k
Storage Instruction	Store at -20°C for up to 1 year from the date of receipt, and avoid repeat freeze-thaw cycles.

TARGET INFORMATION

Gene ID	354
Gene Symbol	KLK3
Uniprot ID	KLK3_HUMAN
Immunogen	Synthesized peptide derived from the human Prostate-Specific Antigen (PSA) at the amino acid range 100-200
Immunogen Region	100-200 aa
Specificity	This antibody detects endogenous levels of human Prostate-Specific Antigen (PSA). Heat-induced epitope retrieval (HIER) TRIS-EDTA of pH8.0 was highly recommended as antigen repair method in paraffin se
Immunogen Sequence	



Human prostate tissue was stained with Anti-Prostate-Specific Antigen (ABT-PSA) Antibody

Human prostatic adenocarcinoma tissue was stained with Anti-Prostate-Specific Antigen (ABT-PSA) Antibody

This product is suitable for in-vitro studies under the RESEARCH USE ONLY [RUO] licence. This product must not be used as for diagnostic or other medical purposes.
St John's Laboratory Ltd, Knowledge Dock Business Centre, University Way, London, E16 2RD | Tel: 0208 223 3081